



SmartSync Pro

Version 3.4

Copyright © 2000-2012, SmartSync Software

Table of Contents

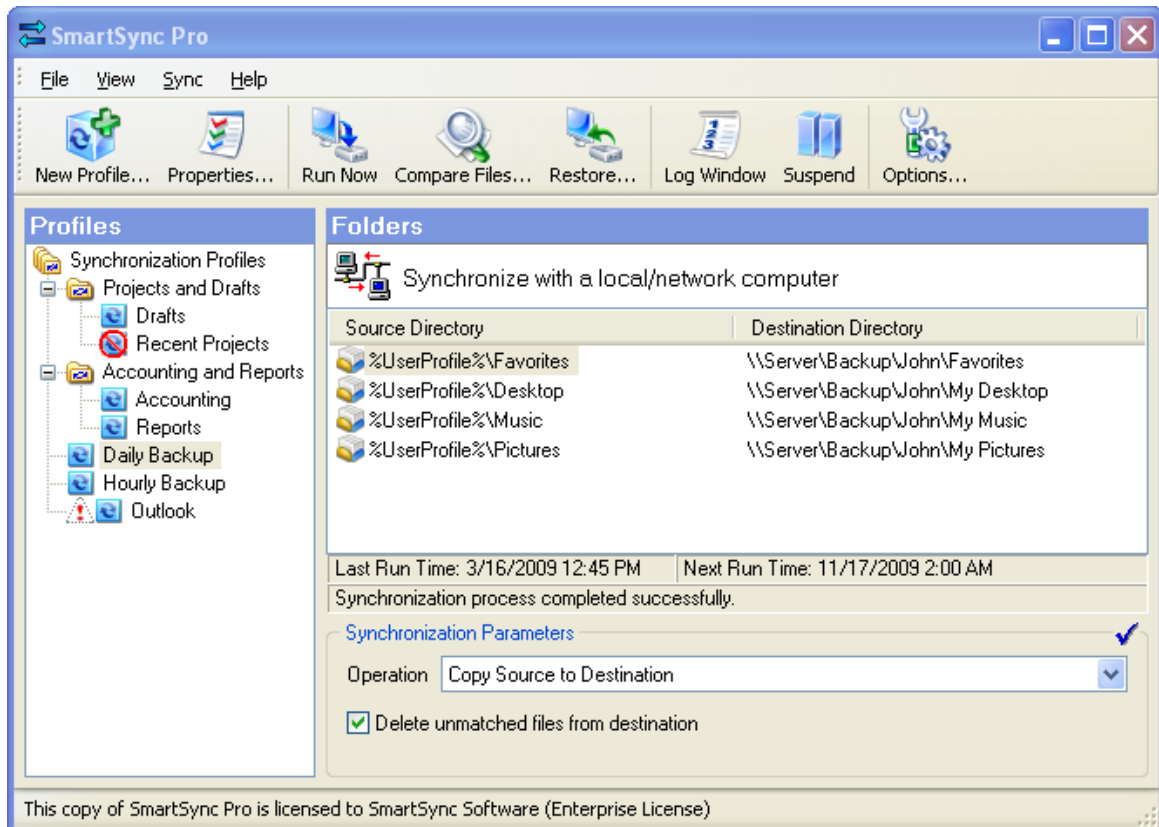
Foreword	0
Part I Getting started	4
1 Product Overview	4
2 Copyright	5
3 Features	5
4 License Agreement	6
5 System requirements and installation	8
6 Uninstalling	8
Part II Basics	9
1 Profiles	9
2 Folders	10
3 Synchronization Types	10
4 Packages	11
Part III SmartSync Pro Interface	12
1 Menus	12
File	13
View	14
Sync	14
Help	15
2 Tool Bar	16
3 Profile Properties	17
General	18
Remote Synchronization	20
Copy Options	21
File Comparison	22
Include Masks	24
Exclude Masks	26
Schedule	27
Events	29
Security	31
Notifications	32
4 Folder Properties	33
Preferences	33
Include Masks	35
Exclude Masks	37
5 Synchronization Parameters	38
6 System Tray Icon	38
7 Options	39
Preferences	39
Startup	41

FTP	42
Email	43
Activity Logging	45
Service	46
8 New Profile Wizard	47
Welcome	47
Select Folders for Synchronization	48
Folder Properties	48
Include Files	49
Exclude Files	50
Schedule	50
Wizard Completed	51
9 Restore Wizard	52
Select Backup Files	52
Select Destination Folders	52
Select Files to Restore	53
10 Compare Files	54
11 Connection Security	54
12 Interface Language	55
Part IV How to...	56
1 How to Backup Files	56
2 How to Restore Files	56
3 How to Synchronize Files via LAN	57
4 How to Synchronize Files between Remote Computers	57
5 How to run SmartSync Pro as a service under Windows NT/2000/XP/Vista?	58
6 How to use command line options?	58
7 How to backup to CD/DVD	59
Part V Ordering, Registration and Support	60
1 How to Register?	60
2 After Registration	60
3 Contact Information	60
Part VI What's New in SmartSync Pro 3?	62
Index	63

1 Getting started

- [Product Overview](#)
- [Copyright](#)
- [Features](#)
- [License Agreement](#)
- [System requirements and installation](#)
- [Uninstalling](#)

1.1 Product Overview



SmartSync Pro is a universal full featured backup and synchronization tool that can mirror any number of files or directories, whether on local disks and network shares or across remote locations that can only be reached via removable media. SmartSync Pro's local synchronization is an excellent safety measure for backing up important data, and gives users the option to continue working locally in the event of any server problems. SmartSync Pro also provides a quick, easy and foolproof method to mirror large amounts of data between remote locations (e.g., home and office PC) by transferring only the new, updated or deleted file information.

SmartSync Pro uses a flexible filtering system to keep synchronized only the files you need. It synchronizes only files you have changed or deleted since last synchronization. One mouse click is enough to move an exact copy of your files to another computer.

1.2 Copyright

Copyright © SmartSync Software 2000-2012. All rights reserved.

Windows® and Microsoft® are Registered Trademarks of Microsoft® Corporation. All trademarks and registered trademarks used in this documentation are property of their respective owners.

1.3 Features

Common Features:

- Attractive and easy to use interface.
- Synchronizes your data only when it needs synchronizing.
- Flexible filtering system to include only the files you want.
- Tree-like structure of profiles and profile groups.
- Drag and drop support for folders, profiles and profile groups.
- Activity log.
- Easy to use [New Profile Wizard](#) for creating new profiles.
- Color highlighting for new, modified and deleted files and file conflicts.
- Detailed synchronization progress for all operations.
- Resolves file conflicts when the same files have been modified on both sides.
- Adjusts for different time zones, Daylight Saving Time.
- [Scheduling support](#) to run profiles whenever you want.
- Can [dial-up before synchronization](#) and hang up afterward.
- [Can run external programs](#) before and after synchronization.
- [Profile access can be restricted](#) to selected users only.
- Detects locked files and asks to retry to overwrite them.
- [Command line support](#).
- Can be [run as a service](#) under Windows 7/Vista/Home Server 2011/XP/2000/Server 2008/Server 2003 (x86 and x64).

Local Synchronization/Backup Features:

- Makes an exact copy of your directories on network computer, ZIP/JAZ drive or [CD-R/CD-RW](#).
- Synchronizes two or more directories with option for deleting obsolete files.
- Allows for your backup files to be compressed in a ZIP archive.
- Allows for restoring source files from a ZIP archive with an easy to use [Restore Wizard](#).
- Makes an incremental backup.
- Allows for restoring source files from incremental backup with an easy to use [Restore Wizard](#).
- Can connect to a network drive with different user name and password.

Remote Synchronization Features:

- Move modified files in a compressed package.
- Can send packages to flash drive, floppy, FTP server or by Email directly from the program.
- Can load packages from flash drive, floppy, FTP server or from POP3 server directly from the program.
- Split packages by a given size.
- Disk spanning support.
- Preserves up to 100 last versions of replaced and deleted files.
- Easy restoring of preserved files.
- Password protection for packages.

1.4 License Agreement

SmartSync SOFTWARE
Electronic End-User Software License Agreement

THIS AGREEMENT IS A LEGAL DOCUMENT. READ IT CAREFULLY BEFORE COMPLETING THE REGISTRATION PROCESS. IT PROVIDES A LICENSE TO USE THE SOFTWARE AND CONTAINS WARRANTY INFORMATION AND LIABILITY DISCLAIMERS. BY REGISTERING AND USING THE SOFTWARE, YOU ARE CONFIRMING ACCEPTANCE OF THE SOFTWARE AND AGREEING TO BECOME BOUND BY THE TERMS OF THIS AGREEMENT.

1. Definitions

This agreement cover SmartSync Pro synchronization utility, related documentation and any and all updates thereto, including Minor Updates and Major Updates, referred to as Software hereafter.

Any Software installation package released after a user has initially installed the Software is considered as an Update. The Minor Update is a release containing the bug fixes, improving the convenience of use and providing minor extensions to the Software functionality. The Major Update is a release essentially changing or extending the Software functionality compared to the previous version.

The Software may be installed in two versions: Demo Version and Registered Version. Both versions are fully functional. The difference between them is that Demo Version does not contain the information about the registered owner, while the Registered Version does. The Demo Version stops working after 30 days of trial period. It may be converted into a Registered Version at any time, before or after the expiration of the trial period just by entering the registration information provided by the authorized software distributor. The Registered Version has an unlimited time of operation.

The Demo Version is free to copy, install and distribute as an original installation package. The Registered Version may be distributed only by the Copyright Owners or by authorized distributors of this software. The Copyright Owners are those listed in the "About" box, which appears when the "About" menu item is selected from software Help menu.

2. License to use:

One copy of the registered version of Software may either be used by a single person who uses the software personally on one or two computers, or installed on a single workstation used non-simultaneously by multiple people, but not both.

If you are a registered user, you are entitled to use this product for your own work. You may not alter, sell, rent, or lease the software to others without the prior express written permission of the Copyright Owners or their authorized distributor.

You must not give away your registration code. Doing so will result in an infringement of copyright. The Copyright Owners retain the right of claims for compensation in respect of damage, which occurred by your giving away the registration code. This claim shall also extent to all costs, which Copyright Owners incur in defending themselves.

3. License to redistribute

You are licensed to make copies of the unmodified Demo Versions of this Software Installation package as you wish and to give exact copies of the unmodified Demo Version to anyone.

You are specifically prohibited from charging, or requesting donations, for any such distribution without the prior express written permission of the Copyright Owners.

4. No additional licenses

All rights to the Software and documentation not expressly granted under this Agreement are reserved to Copyright Owners. You may not translate, decompile, disassemble or reverse engineer the Software or documentation.

5. Software upgrades

If you had registered the Software, you are granted the right to receive (download) and install all the Minor Updates to the version initially installed free of charge. Installation of a Major Update may or may not require an upgrade fee, which is at sole discretion of the Copyright Owners.

Installation of the Minor Update does not require repeating the registration procedure, as the registration data will be inherited from the previous installation. Installation of a Major Update will or will not require new registration.

The users of the Demo Version may install the Minor Updates over their existing installation only during their trial period. Installation of the Minor Update does not extend the evaluation period. However, they can install Major Updates even after termination of the trial period and receive additional 30 days for evaluation of the Update.

The Copyright Owners and their authorized distributors will keep the Software users informed about the appearance of the software updates, using postings on the distributor Web sites or directly through mailing lists, if the user wishes so.

6. Disclaimer of limited warranty

The Copyright Owners warrant, that

- (i) When used with a recommended hardware configuration, the Software will perform in substantial conformance with the documentation supplied with the Software;
- (ii) The media on which the Software is furnished will be free from defects in materials and workmanship under normal use.
- (iii) The Copyright Owners will continue the work on improvement of the Software quality, issue and distribute the Software updates as described above at appropriate time at their convenience. The users are welcome to submit their comments on the software quality or suggestions to its improvement through the authorized distributors and these comments and suggestions will be taken into account in the development process.

EXCEPT AS SET FORTH IN THE FOREGOING LIMITED WARRANTY, THE COPYRIGHT OWNERS DISCLAIM ALL OTHER WARRANTIES OR CONDITIONS, EITHER EXPRESS OR IMPLIED, INCLUDING THE WARRANTIES OR CONDITIONS OF MERCHANTABILITY, FITNESS FOR A PARTICULAR PURPOSE AND NONINFRINGEMENT. IF APPLICABLE LAW IMPLIES ANY WARRANTIES WITH RESPECT TO THE SOFTWARE, ALL SUCH WARRANTIES ARE LIMITED IN DURATION TO THIRTY (30) DAYS FROM THE DATE OF SOFTWARE INSTALLATION.

UNDER NO CIRCUMSTANCES AND UNDER NO LEGAL THEORY, TORT, CONTRACT, OR OTHERWISE, SHALL THE PRODUCERS OF THIS SOFTWARE OR ITS SUPPLIERS OR RESELLERS BE LIABLE TO YOU OR ANY OTHER PERSON FOR ANY INDIRECT, SPECIAL,

INCIDENTAL, OR CONSEQUENTIAL DAMAGES OF ANY CHARACTER INCLUDING, WITHOUT LIMITATION, DAMAGES FOR LOSS OF GOODWILL, WORK STOPPAGE, COMPUTER FAILURE OR MALFUNCTION, OR ANY AND ALL OTHER COMMERCIAL DAMAGES OR LOSSES. IN NO EVENT WILL THE PRODUCER OF THIS SOFTWARE BE LIABLE FOR ANY DAMAGES IN EXCESS OF THE LIST PRICE FOR A LICENSE TO USE THE SOFTWARE.

(USA only). SOME STATES DO NOT ALLOW THE EXCLUSION OF IMPLIED WARRANTIES, SO THE ABOVE EXCLUSION MAY NOT APPLY TO YOU. THIS WARRANTY GIVES YOU SPECIFIC LEGAL RIGHTS AND YOU MAY ALSO HAVE OTHER LEGAL RIGHTS WHICH VARY FROM STATE TO STATE.

1.5 System requirements and installation

System Requirements

- Windows Windows 7/Vista/XP/2000/2003/2008/Home Server 2011. Both x86 and x64.
- 10 MB of available hard disk space
- 256 MB RAM, or more
- 233-megahertz (MHz) or higher processor

Installation

You must have administrator rights to install SmartSync Pro on your computer. The Installation Wizard guides you through the steps needed to install the software.

1.6 Uninstalling

It is relatively simple to uninstall SmartSync Pro.

To uninstall SmartSync Pro:




- From the Windows Start menu, select All programs > SmartSync Pro
- Select Uninstall SmartSync Pro
- Click the Next button to confirm that you want to remove the program.
- Click the Finish button to perform the uninstall.
- The uninstall program removes program files, folders, and registry entries. When the files are removed, the uninstall program indicates that the process is complete.
- Click OK.

2 Basics

- [Profiles](#)
- [Folders](#)
- [Synchronization Types](#)
- [Packages](#)

2.1 Profiles






A SmartSync Pro profile is an object that contains a set of [folders](#), processing and scheduling [options](#), and [inclusion](#) and [exclusion](#) filters. Each profile has a unique name. Synchronization profiles are organized in a tree-like structure. Sets of profiles can also be grouped into a profile group.

How to...	Description
Create new profile	Select menu File New Profile, click  button on the toolbar or press Ctrl+N and follow the instructions.
Rename profile name	Select a profile you want to rename. Select menu File Rename or press F2.
Duplicate profile	Select a profile you want to duplicate. Select menu File Duplicate.
Delete profile	Select a profile you want to delete. Select menu File Delete or press Ctrl+Delete
Enable/Disable profile	Select a profile you want to enable/disable. Select menu File Enable/Disable respectively or press Ctrl+E.
Change profile properties	Select a profile and press Alt+Enter or select menu File Properties or click the  button.
Run profile	Select a profile you want to run. Click  button or press F5.
Create a shortcut on the Desktop	Select a profile, select menu File Create a ShortCut on the Desktop. The program will create a shortcut on the Desktop to run the selected profile and then exits the program.

You can move profiles between profile groups using drag and drop. You can also copy folders from one profile to another using drag and drop.

Select a profile group to show common statistics for all profiles in the group.


Profiles are characterized by different icons according to their state

-  - Normal state. The profile is ready to run. Double click the icon to show profile properties.
-  - Error state. The profile generated errors during the last synchronization. See log window for details.
-  - Synchronization state. The profile is backing up or synchronizing. Double click the icon to show synchronization progress.
-  - Disabled state. The profile is disabled. Scheduling is skipped for this profile. Use menu File | Enable/Disable to enable/disable the profile respectively.
-  - Inaccessible state. The profile is inaccessible for the current user. You need a password to

access the profile. Profile access is set in the [Security page](#) of the profile properties box.

2.2 Folders

The SmartSync Pro folder is an object that contains information about which files you want to synchronize. Each folder has a unique name within profile.

How To...	Description
Create new folder	Select menu File New Folder and fill out the folder properties .
Rename folder name	Select a folder you want to rename. Select menu File Rename.
Duplicate folder	Select a folder you want to duplicate. Select menu File Duplicate.
Delete folder	Select a folder you want to delete. Select menu File Delete.
Enable/Disable folder	Select a folder you want to enable/disable. Choose menu File Enable/Disable. If you disable a folder then it will be omitted from any processing.
Change folder properties	Select a folder and press Alt+Enter or select menu File Properties or click  button.

You can change the order of folders in a profile using drag and drop. You can also copy folders from one profile to another using drag and drop.

2.3 Synchronization Types

SmartSync Pro supports two types of synchronization:

Synchronize/Backup files on a single computer or between computers that are connected via local network.

SmartSync Pro has many advanced features to backup or synchronize your important data to a network drive, ZIP/JAZ disk, NAS or [CD/DVD](#)

You can copy source files to a destination folder, move files, synchronize source and destination folders, compress source files to a single zip file, make a compressed incremental backups. You can restore source files from a backup copy.

Note: Backups to CD/DVD are done via the Packet Writing interface to your CD/DVD drive.

Examples of Packet writing interfaces are:

- Roxio Drag-to-Disk
- Nero InCD

Windows Vista supports

Synchronize files on two or more computers that you can't connect through a local network.

This is an ideal solution for using the same files both at home and in the office.

Trying to do this by hand is fraught with problems. Because files on the remote computer are inaccessible, you have to remember which files have been created, modified updated and deleted on either side. SmartSync Pro does this for you. Another problem is that you may makes this easy by doing it for you. You might also want to synchronize a lot of files, possibly occupying several hundred files or several gigabytes of information, but you usually change are only a couple of hundred KBytes and you want to transfer only changed files to the second computer changing a few

hundred kilobytes of data. SmartSync Pro solves this problem makes this easy for you by tracking any changes made since the last synchronization.

When you are ready to move changed files to the remote computer the program transfer your changes to the second computer, it compresses and combines all the changed files into the a single package, which is then copied that you can copy that to a floppy, Zip, USB drive or CD/DVD disk or that you can send using email or uploaded to an FTP server.

Once the package arrives at the second computer, SmartSync Pro either loads the package from the removable disk or download it from the FTP server and then applies apply any updates to the destination directories.

2.4 Packages

Packages are files used in synchronization between computers that you can't connect through a local network. A package is a ZIP file with .ssp extension. SmartSync Pro merges files that were created or modified since the last synchronization into the package before sending it to the remote computer.

The root directory of a package contains a SmartSync.options file (with profile properties).

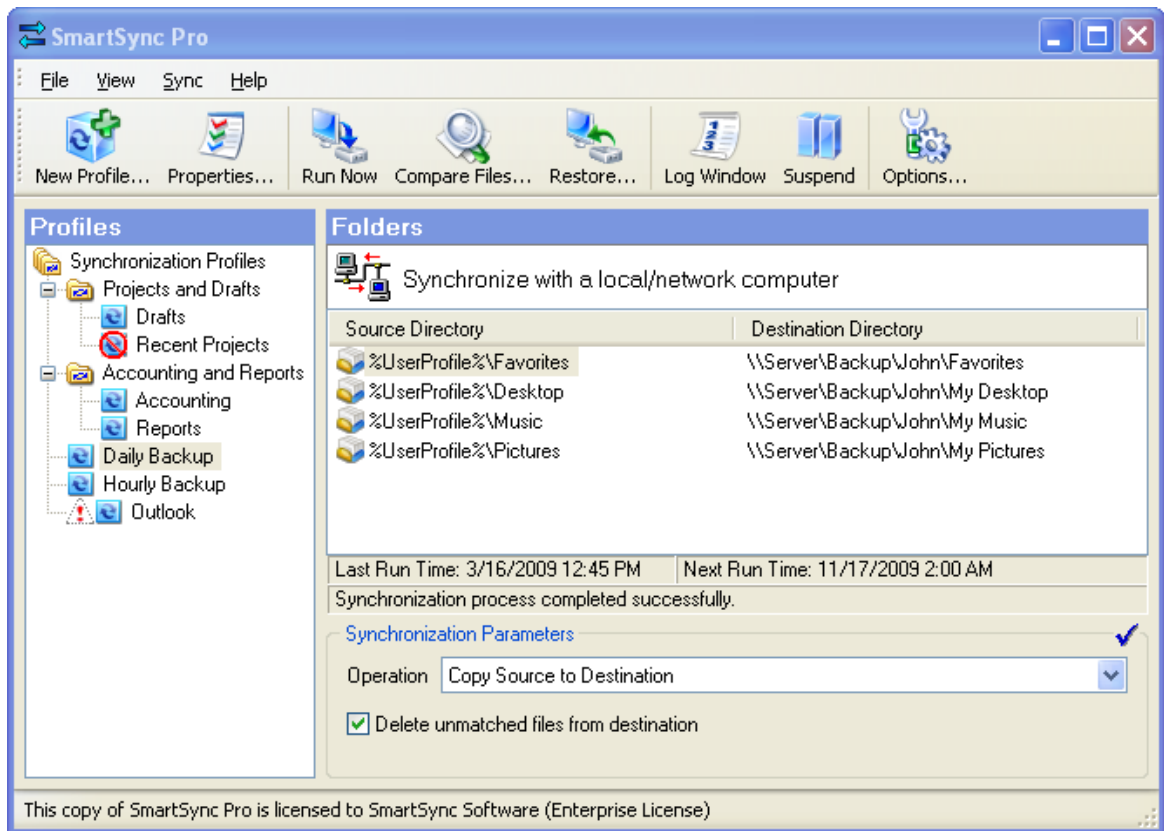
Each new and modified file of a [folder](#) are located in a directory with a folder name. The SmartSync.options file in this directory contains folder properties and a list of deleted files.

You can split a package into several parts. The first part will have an extension .ssp, the second part .s02, the third part .s03 and so on.

These parts are not valid spanned zip files, but a single zip file divided into several parts.

3 SmartSync Pro Interface

The main window contains the program controls.



[Main menu](#)

Contains the menu items for performing program actions.

[Toolbar](#)

Contains buttons for the most commonly used functions.

[Profiles](#)

Shows a tree-like structure of profiles and profile groups. Select a profile to see its [folders](#) and [synchronization parameters](#).

[Folders](#)

Shows the list of folders. Each folder has a name and other [properties](#).

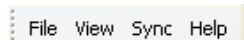
[Synchronization Parameters](#)

Some of profile properties are collected into a synchronization parameters group. The parameters list depends on [type of synchronization](#) used.

Status bar

Shows hints and copyright information.

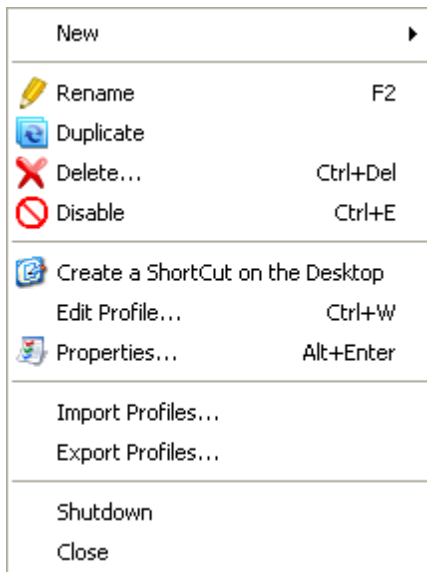
3.1 Menus



SmartSync Pro menus contains the following items:

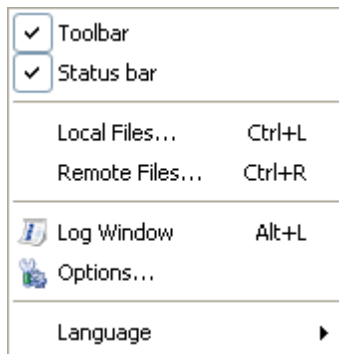
- [File](#)
- [View](#)
- [Sync](#)
- [Help](#)

3.1.1 File



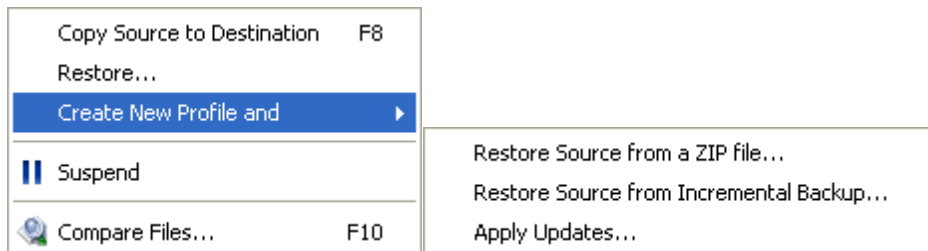
Menu Item	Description
New > Profile	Opens a New Profile Wizard to create new profile.
New > Group	Creates a new group that may contain subgroups and profiles. You can run all the profiles within a group by a single click.
New > Folder	Add a folder to selected profile.
Rename	Renames the selected item (profile, group or folder).
Duplicate	Duplicates the selected item (profile, group or folder).
Delete	Deletes the selected item (profile, group or folder).
Disable/Enable	Disables/Enables the selected item (profile, group or folder).
Create a ShortCut on a Desktop	Creates a shortcut on the desktop to run selected profile or profile group and then exits.
Edit Profile	Opens an Edit Profile Wizard to edit profile properties using a wizard.
Properties	Opens a profile properties or a folder properties dialog box.
Import Profiles...	Imports profiles from a file with .profiles extension.
Export Profiles...	Exports selected profile or profiles group to a file with .profiles extension.
Shutdown	Shutdown SmartSync Pro.
Close	Closes the SmartSync Pro window. If the option Exit when close main window has checked then the program will shutdown.

3.1.2 View



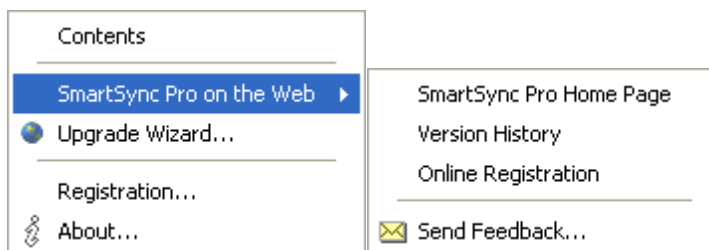
Menu Item	Description
Toolbar	Displays/Hides the toolbar .
Status bar	Displays/Hides the status bar.
Local Files...	Opens a Local Files dialog box to show you the list of files in the source folders.
Remote Files...	Opens a Remote Files dialog box to show you the the list of files in the destination folders.
Log window	Shows/Hides the Log window to see program activity log.
Options	Opens an Options dialog box to change program options.
Language	Allows you to change the current language used by the program.

3.1.3 Sync



Menu Item	Description
Copy Source to Destination	Depends on the selected Operation this item may have other caption. Choose this menu item to run selected profile or profiles group. Note: this item is only available in normal state only.
Restore...	Opens Restore Wizard to restore source files from backup copies. Note: this item is only available in normal state only.
Show Progress	Open synchronization progress window for selected profile. Note: this item is only available in Synchronization state only.
Stop	Stops execution of the selected profile. Note: this item is only available in Synchronization state only.
Create new profile and > Restore source from a ZIP file	Choose this item to restore files from selected zip archive. New profile will be created based on the zip archive and Restore Wizard dialog will be displayed to guide you through the steps needed to restore files. This option is useful when you have lost you SmartSync Pro profiles and want to restore your files and start from scratch.
Create new profile and > Restore source from Incremental Backup	Choose this item to restore files from incremental backup files (.ssp extension). You may select any of the backup files set. New profile will be created based on the backup file and Restore Wizard dialog will be displayed to guide you through the steps needed to restore files. This option is useful when you have lost you SmartSync Pro profiles and want to restore your files and start from scratch.
Create new profile and > Apply Updates	Loads synchronization package , creates new profile for the package and applies updates from selected package.
Suspend/Resume	Suspends/Resumes all running profiles.
Compare Files...	Opens a Compare Files dialog box to compare files between source and destination folders.












3.1.4 Help



Menu Item	Description
Contents	Opens contents of SmartSync Pro Help System.
SmartSync Pro on the Web > SmartSync Pro Home Page	Opens your Web browser at SmartSync Pro home page. www.smartsync.com
SmartSync Pro on the Web > Version History	Opens your Web browser at SmartSync Pro version history page. www.smartsync.com/smartsyncpro/whatsnew.html
SmartSync Pro on the Web > Online Registration	Opens your Web browser at SmartSync Pro order page. www.smartsync.com/order/
SmartSync Pro on the Web > Send Feedback	Opens your Web browser at SmartSync Pro support page. You can write any questions and suggestions about SmartSync Pro and send it to the support team. www.smartsync.com/support/
Upgrade Wizard...	Opens an Upgrade Wizard to check if a new version of SmartSync Pro is available.
Registration...	Opens a Registration dialog box to enter your registration key.
About...	Displays copyright and version information about SmartSync Pro.

3.2 Tool Bar

The toolbar in SmartSync Pro main window provides shortcuts for selected menu commands. Toolbar hints are available. Depends on the current state of the program the toolbar may contain the following buttons:

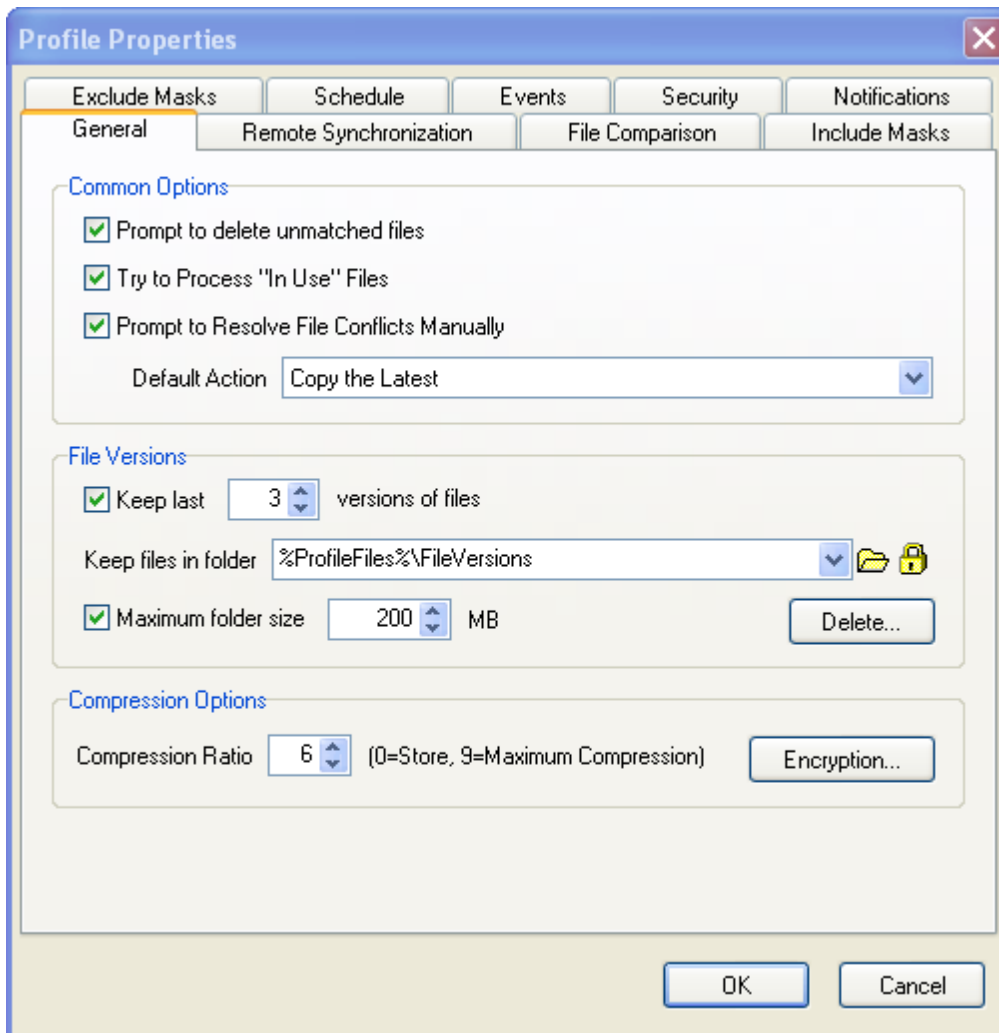
Button	Description
 New Profile...	Opens the New Profile Wizard to create new synchronization profile.
 Properties	Opens the properties box for a selected item (profile or folder).
 Run Now	Starts the synchronization process for a selected profile or a group of profiles. Note: this item is only available in normal state only.
 Compare Files...	Shows which files were changed since last synchronization. Note: this item is only available in normal state only.
 Restore...	Starts Restore Wizard to restore source files from backup copy. Note: this item is only available in normal state only.
 Show Progress	Open synchronization progress window for selected profile. Note: this item is only available in Synchronization state only.
 Stop	Stops execution of the selected profile. Note: this item is only available in Synchronization state only.
 Log Window	Shows/Hides the Log window to see program activity log.
 Suspend/Resume	Suspends/Resumes all running profiles.
 Options	Opens an Options dialog box to change program options.
 Buy Now!	Opens your Web browser at SmartSync Pro order page. www.smartsync.com/order/

3.3 Profile Properties

Profile Properties dialog contains the following pages:

- [General](#)
- [Remote Synchronization](#)
- [Copy Options](#)
- [File Comparison](#)
- [Include Masks](#)
- [Exclude Masks](#)
- [Schedule](#)
- [Events](#)
- [Security](#)
- [Notifications](#)

3.3.1 General



The General page of the Profile Properties dialog box is used to specify general options for the profile. Contents of this page depends on the [synchronization type](#) of the profile.

Common Options

Prompt to delete unmatched files - check this box if you want to confirm file deletions during synchronization.

Try to process "In Use" files - check this box to let SmartSync Pro try to copy files that are currently in use by other programs by means of advanced locking techniques. If the program that is currently using the file cannot handle this kind of locking mechanism, it may generate errors. Use this option with caution!

Prompt to resolve file conflicts manually - check this box if you want to handle file conflicts manually.

Default Action

Choose the default action for resolving file conflicts.

Span files across multiple removable disks - If you copy/compress files to a disk, and the disk is too small SmartSync Pro will prompt you to insert new disk to continue operation.

File Versions (available for Copy source to destination, Move source to destination, Synchronize

source and destination and Remote Synchronization only)

Keep last xxx versions files - SmartSync Pro allows you to preserve old versions of files in a special folder. To restore previous versions of files select the profile, open local popup menu and select "Restore Previous Versions" item. The Restore Files dialog box will be opened.

Keep files in folder - specified number of previous versions of file are stored in a given folder.

Maximum folder size - you can limit the total size of the folder to prevent disk overload.

Delete... - click this button to delete all files in the folder specified above. Be careful using this function!

Compression Options (available for Compress source into a single ZIP file, Incremental Backup and Remote Synchronization only)

Compression Ratio - Specify the compression ratio to compress files. The default is set to the optimum value.

Encryption - click this button to protect your compressed backups using the latest encryption techniques.

Do not encrypt - creates unprotected backups.

PKZip 2.0 compatible - creates password protected ZIP archives, compatible with PKZip 2.0 and built-in Windows zip browser (XP or later).

AES (Strong encryption) - encrypt your data using U.S. government-certified Advanced Encryption Standard (AES 256-bit) encryption security.

Password - specify a password to access encrypted files.

Retype Password - retype the password for verification.

Backup Options (available for Incremental Backup only)

Restart Full Backup - Restarts full backup at specified period. If you choose to restart every week then every 7 days a full backup will be accomplished, between these 2 dates jobs will be done as incremental.

Next Full Backup - shows you the date of the next full backup. You may correct this date manually.

Delete all former backup files - The delete option lets you eliminate all previous jobs (including former full backup).

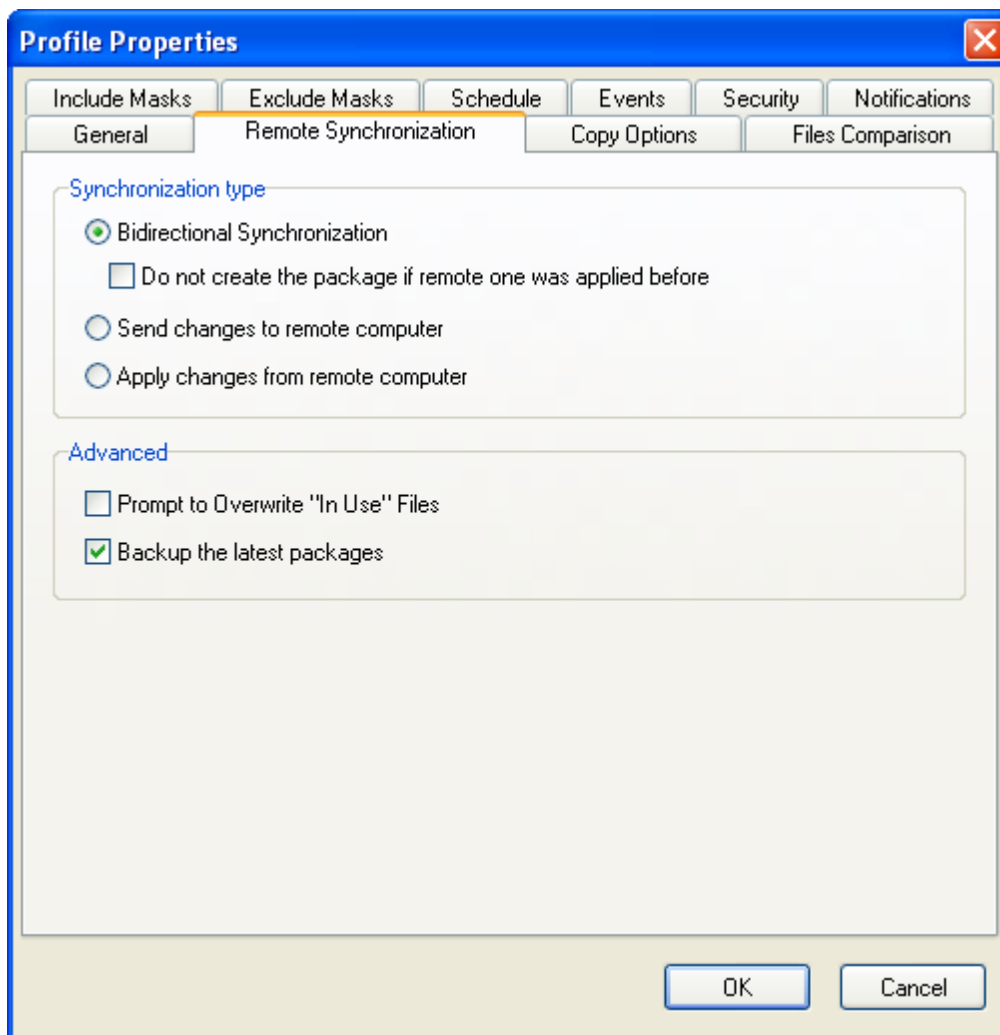
Remote file list - Specifies how to get remote file list to compare with:

Keep file list locally - SmartSync Pro keeps a local copy of remote file list. Use this option if you are sure that all former backups are available.

Get file list from the latest full backup - the program scans all backup files starting with the latest full backup to get the file list. This option is used by default.

Get file list from all backup files - the program scans all available backup files to get the file list.

3.3.2 Remote Synchronization



This page available for [remote synchronization](#) profiles only.

Synchronization type

Bidirectional Synchronization - sets synchronization to and from remote computer.

SmartSync Pro loads packages from remote computer and applies it to the local one. New and modified files will be placed to package and will be sent to the remote computer. If the packages was applied and you do not want to create new package right after that then check box "**Do not create the package if remote one was applied before**".

Send changes to remote computer - SmartSync Pro will always place new and modified files into the package and send it to remote computer. It will not try to load package from remote computer. This option is useful for unidirectional synchronization.

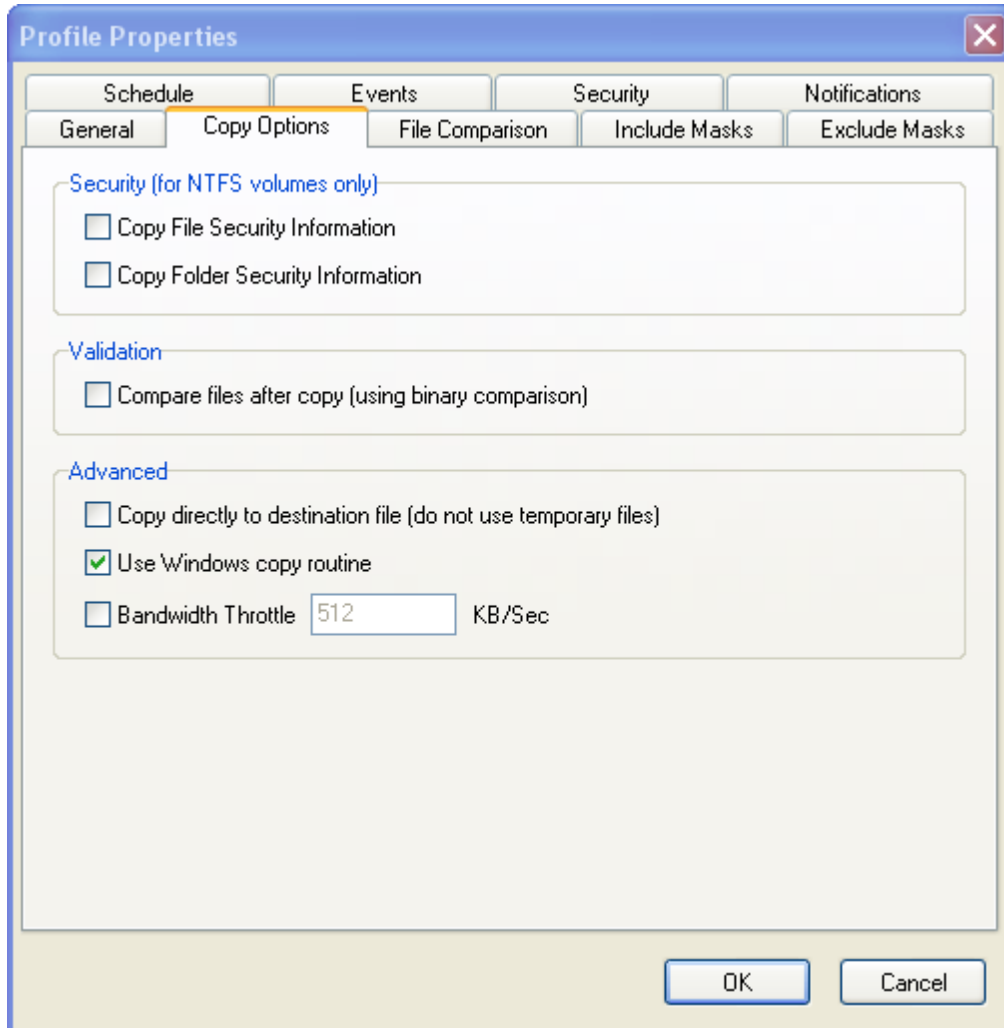
Apply changes from remote computer - SmartSync Pro will always loads packages from remote computer and apply it to the local one. This option is useful for unidirectional synchronization.

Advanced

Prompt to overwrite "In Use" files - if some files were locked during applying updates then SmartSync Pro will show you the list of locked files and will ask you to close them.

Backup the latest packages - allows you to backup the latest packages from remote computer. This may be useful for restoring remote files list.

3.3.3 Copy Options



Use the Copy Options page of the Profile Properties dialog box to set an advanced copy options.

Security (for NTFS volumes only)

Copy File Security Information - causes SmartSync Pro to copy file permissions and other security information when it copies files from an NTFS volume to an NTFS volume.

Copy Folder Security Information - causes SmartSync Pro to copy folder permissions and other security information when it copies folders from an NTFS volume to an NTFS volume.

Validation

Compare files after copy - causes SmartSync Pro to perform a binary comparison of the source and copied files to be sure that it was copied correctly.

Advanced

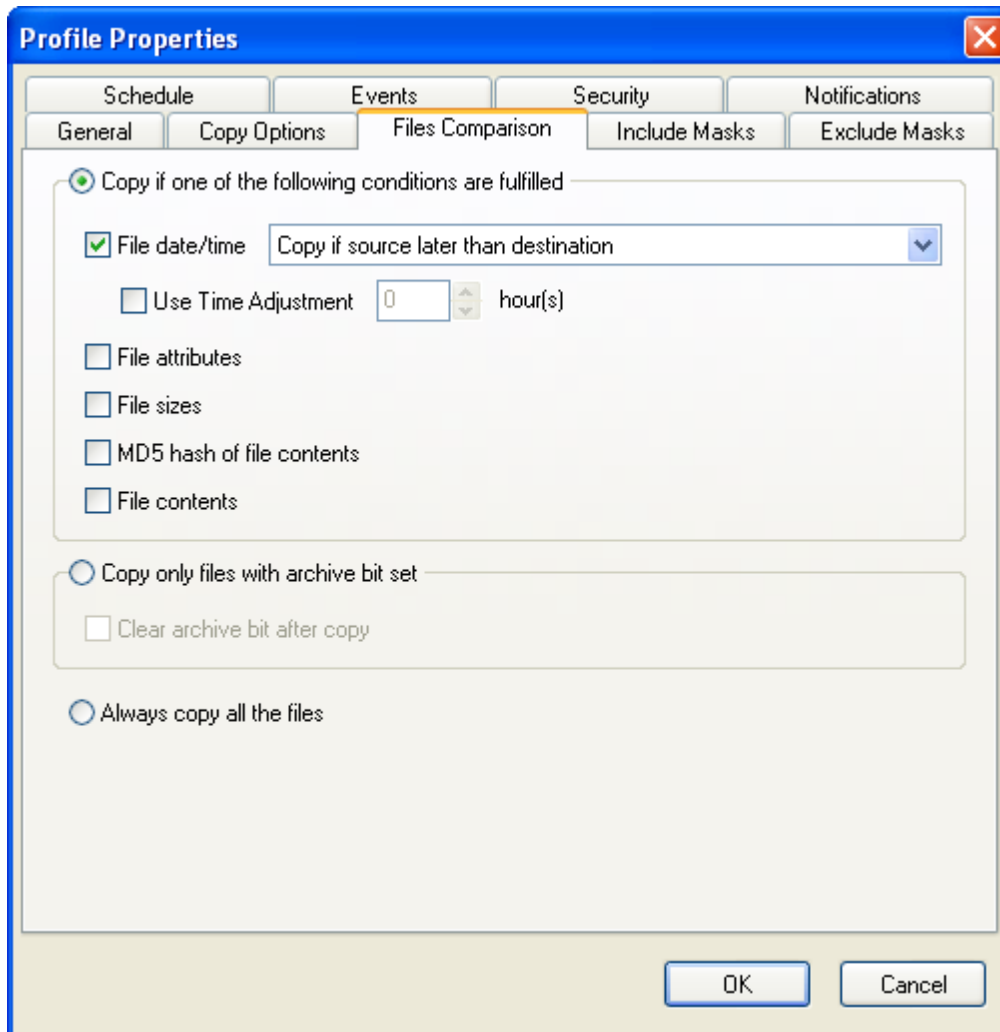
Copy directly to destination file - causes SmartSync Pro to copy files directly over the

destination files. Normally SmartSync Pro copies the source file to a temporary file and then renames it.

Use Windows copy routine - forces to use Windows built-in copy function instead of a sequence of read/write operations.

Bandwidth Throttle - limits ("throttle") the quantity of data SmartSync Pro transmits and/or accepts within a specified period of time. Bandwidth throttling helps limit network congestion.

3.3.4 File Comparison



Use this page to set how SmartSync Pro should determine that file was changed and needs to backup.

Copy if one of the following conditions are fulfilled

File date/time - the File Date/Time method should be sufficient for almost all of your comparison needs. This method works by comparing last modified dates of the files. If either differs, the files are marked as different. You can select how to define if files are different:

Copy if source later then destination - files are differ if source file later than destination file.

Copy if source differ from destination - files are differ if source file date and destination

file date are differ.

Use Time Adjustment xxx hour(s) - Use this to compare files between computers in different time zones, or with a server that has not properly accounted for Daylight Savings time. The Time Adjustment only affects the file comparison display - it does not permanently change the timestamps on files.

File Attributes - compares file attributes like Read Only, Hidden, System, etc.

File Sizes - compares file sizes.

MD5 Hash of File Contents - very rarely two files have identical sizes and date/time stamps but have different content. The MD5 method calculates and compares 128-bit message digests for each of the files.

File Contents - the File Contents method does a binary comparison of the file contents.

Copy only files with archive bit set

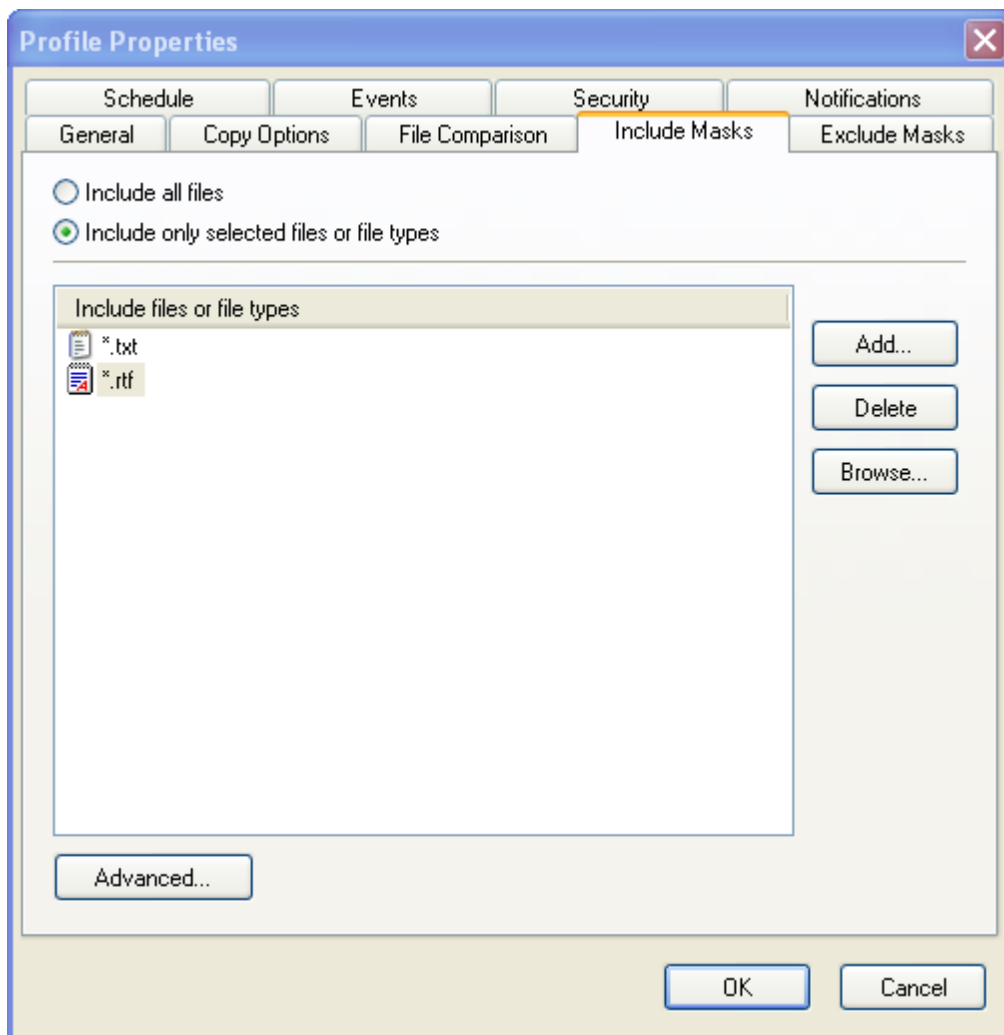
Check this to let SmartSync Pro perform conventional backups that are based on file's archive bit. With this option, SmartSync Pro only copies files that have the archive bit set.

Clear archive bit after copy - with this option, SmartSync Pro resets the archive bit after copying the file.

Always copy all the files

SmartSync Pro perform full backups of all source files.

3.3.5 Include Masks



Use the Include Masks page of the Profile Properties dialog box to specify which files to synchronize.

Include all files

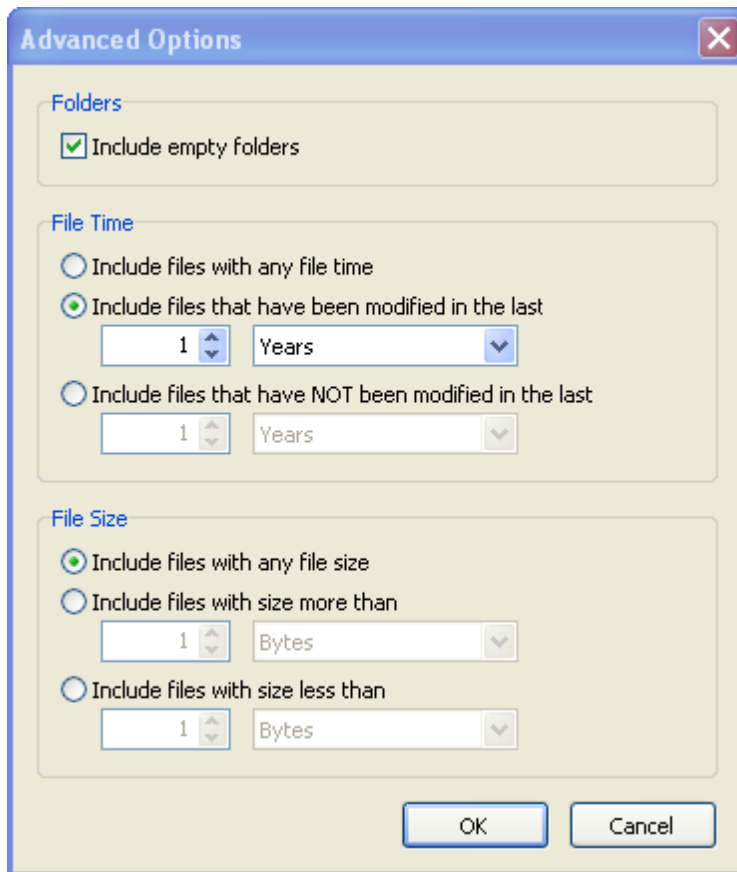
Select this option to include all files from source folders.

Include only selected files or file types

Included files or file types - specifies a list of file names and file masks to synchronize. Use the **Add** button to add file name or file mask to the list. Use the **Delete** button to delete selected rows. Press **Browse** button to select files on the disk.

Advanced

Click this button to open an advanced options.



Include empty folders - synchronizes empty folders. If the folder contains only files which are excluded by other criteria then this folder is also considered as empty.

File Time

Include files with any file time - does not filter files by time.

Include files that have been modified in the last - include only files with the last modification date within the specified period.

Include files that have NOT been modified in the last - include only files with the last modification date older than a specified period.

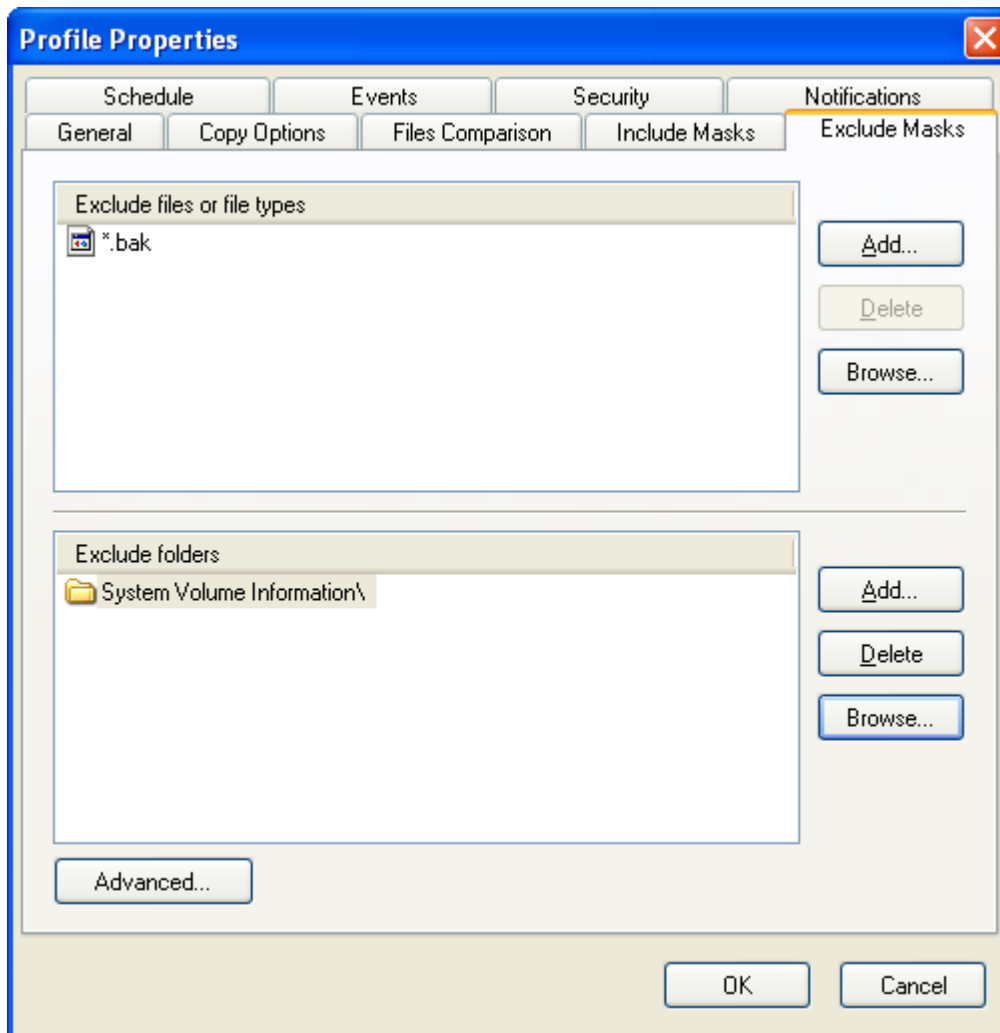
File Size

Include files with any file size - does not filter files by size.

Include files with size more than - include only files with the size more than the specified size.

Include files with size less than - include only files with the size less than the specified size.

3.3.6 Exclude Masks



Use the Exclude Masks page of the Profile Properties dialog box to specify which files or directories you want to exclude from synchronization.

Excluded files or file types

Specify files to exclude from synchronization. You can specify file mask (for example: *.*bak) or file name (for example: Thumbs.db)

Excluded folders

Specify folders to exclude from synchronization.

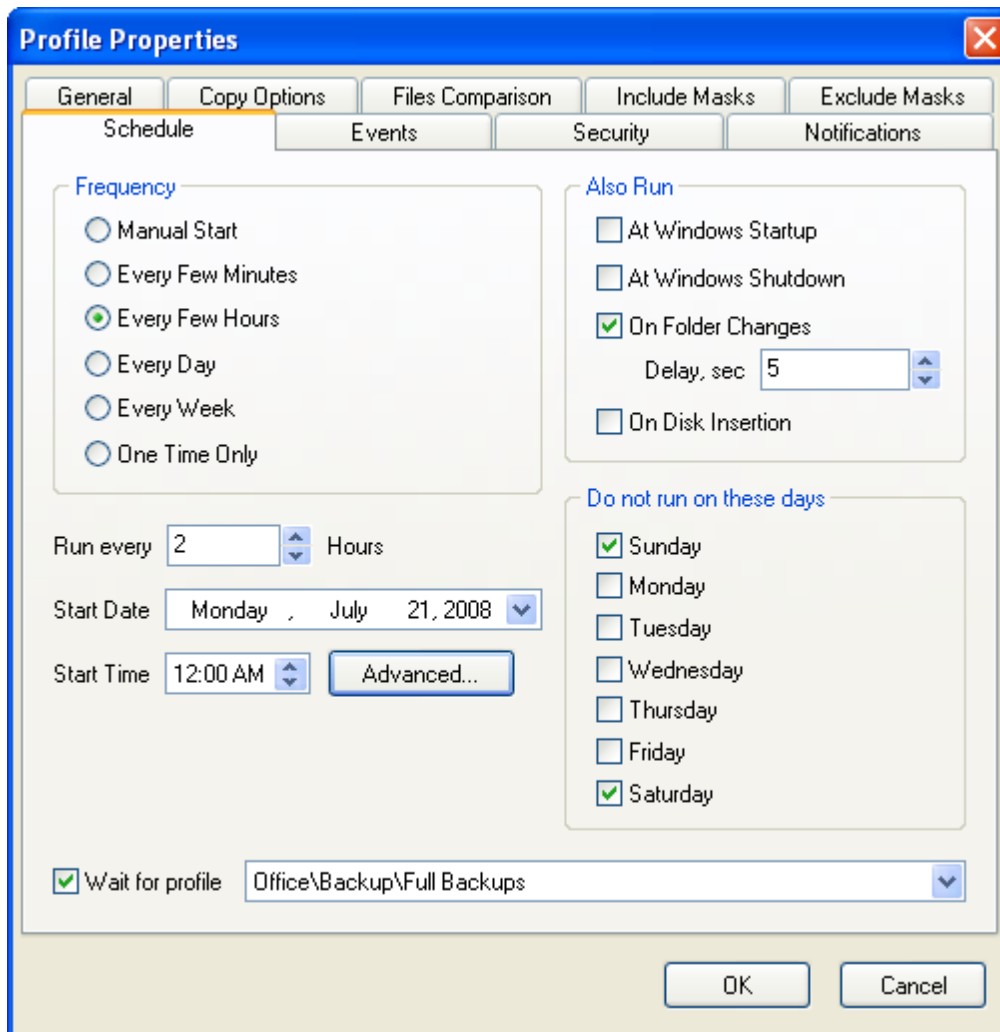
Advanced

Exclude file if exists - specifies special conditions to exclude files if there are files with the same name, but with a different extensions. For example if you specify *.*dcu in the Mask field and pas in the Extension field then SmartSync Pro will excluded each file with dcu extension if there is a file with the same name, but with pas extension in the same folder.

File Attributes - you can exclude files by its attributes. For example you can exclude system and hidden files.

Note

- If you want to exclude all subfolders with name Doc then specify "Doc" in **Excluded Directories**.
- If you want to exclude only root folder Doc and include all subfolders Doc like "My Job\Doc" then specify "Doc\".
- If you want to exclude only subfolders Doc and include root folder Doc then specify "*\Doc\".

3.3.7 Schedule

Use the Schedule page of the Profile Properties dialog box to specify a schedule for the profile.

Select desired frequency.

Frequency	Description
Manual Start	Select Manual Start if you do not want SmartSync Pro to synchronize files automatically. Once setup, you can manually run the profile from the main window as needed.
Every Few Minutes	Run the profile every few minutes. You may select an interval in minutes, a start date and a start time.
Every Few Hours	Run the profile every few hours. You may select an interval in hours, a start date and a start time.
Every Day	Run the profile every few days. You may select an interval in days, a start date and a start time.
Every Week	Run the profile every few weeks. You may select an interval in weeks, a start date and a start time.
One Time Only	Run the profile once, at the specified time. You may select start date and start time.

Note: For the **Every Few Minutes** and **Every Few Hours** frequency, the profile will run from Start Time up to 11:59 PM by default. If you setup an End Time in the Advanced Options then the profile will run up to the End Time.

In addition to a setting the profile run frequency, you can also choose to run the profile at Windows startup and Windows shutdown.

Also Run At	Description
Windows Startup	Run the profile at Windows startup.
Windows Shutdown	Run the profile before Windows shutdown.
On Folder Changes	Run the profile if any file in the source directory is modified. This option makes for practically real-time backups (with a 5-second delay), which is useful if a profile requires an especially fast refresh of the backup copy.
On Disk Insertion	

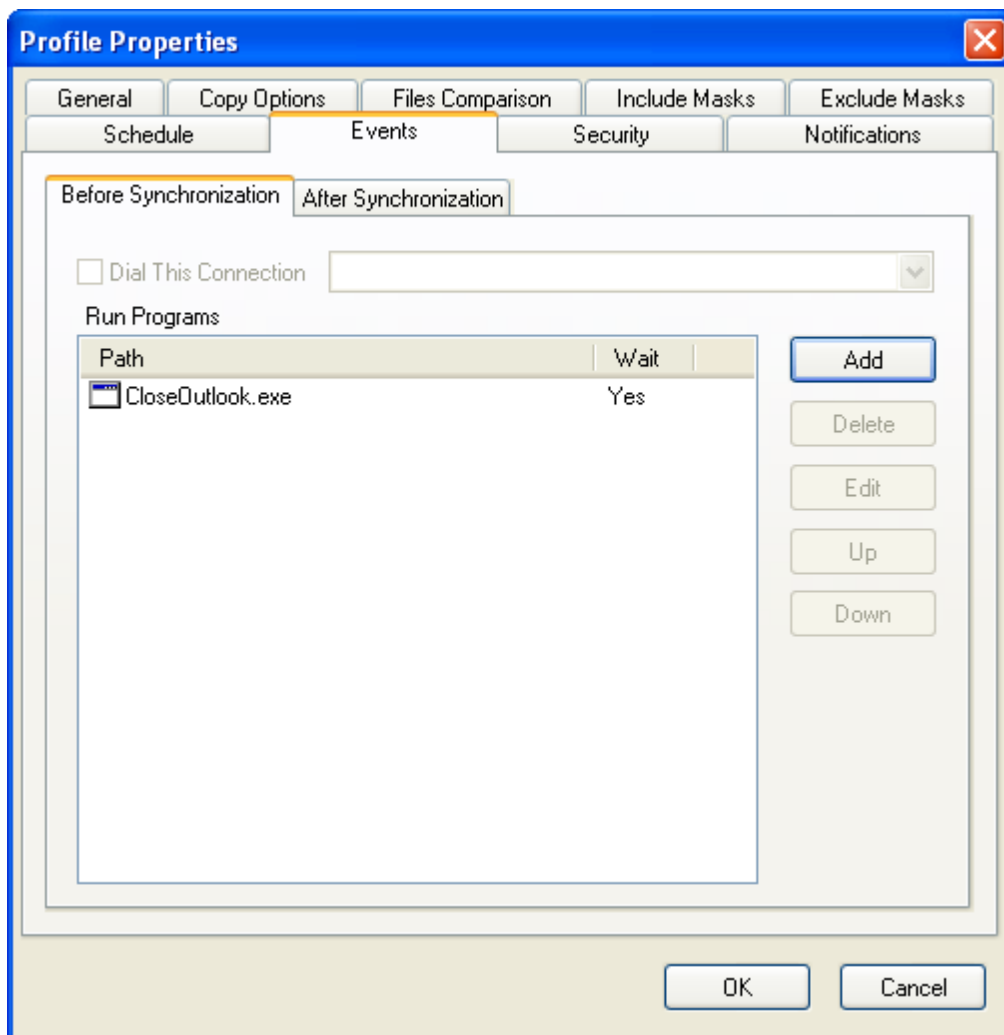
If you do not want to run profiles on some days, you can specify them in the **Do not run on these days** group.

Wait for profile

Check this box and select the profile from the list if you want to execute the profile right after the finish of the selected profile.

Click the **Advanced** button to open the Advanced Options dialog to set additional scheduling options.

3.3.8 Events

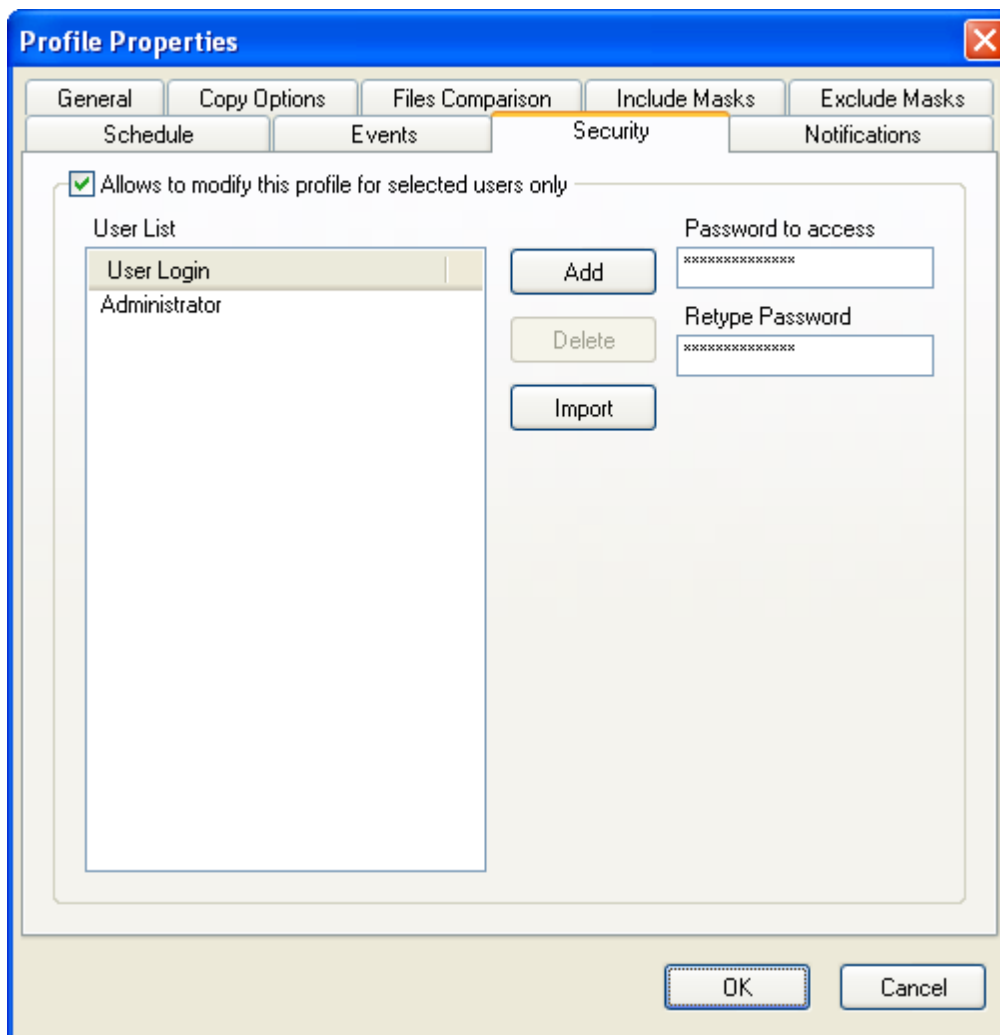


Use the Events page of the Profile Properties dialog box to dial a remote access service or to run any program before or after running a profile.

Before Synchronization	Description
Dial This Connection	Dial the selected connection before running a profile.
Run Programs	Run the selected programs before running a profile. The order of the programs in the list determines the order in which they will be executed.
Add	Adds a new program to the list using the Run Program dialog box.
Delete	Deletes the selected program from the list.
Edit	Modify program path and other options.
Up	Move item up. SmartSync Pro will run this program before next programs.
Down	Move item down. SmartSync Pro will run this program after previous programs.

After Synchronization	Description
Hang Up Connection	Hang up the selected connection after running a profile.
Shutdown Windows	Check this box if you want to shutdown Windows after synchronization. Note: This option is ignored if the profile runs at Windows logon or Windows shutdown.
Run Programs	Run the selected programs before running a profile. The order of the programs in the list determines the order in which they will be executed.
Add	Adds a new program to the list using the Run Program dialog box.
Delete	Deletes the selected program from the list.
Edit	Modify program path and other options.
Up	Move item up. SmartSync Pro will run this program before next programs.
Down	Move item down. SmartSync Pro will run this program after previous programs.

3.3.9 Security



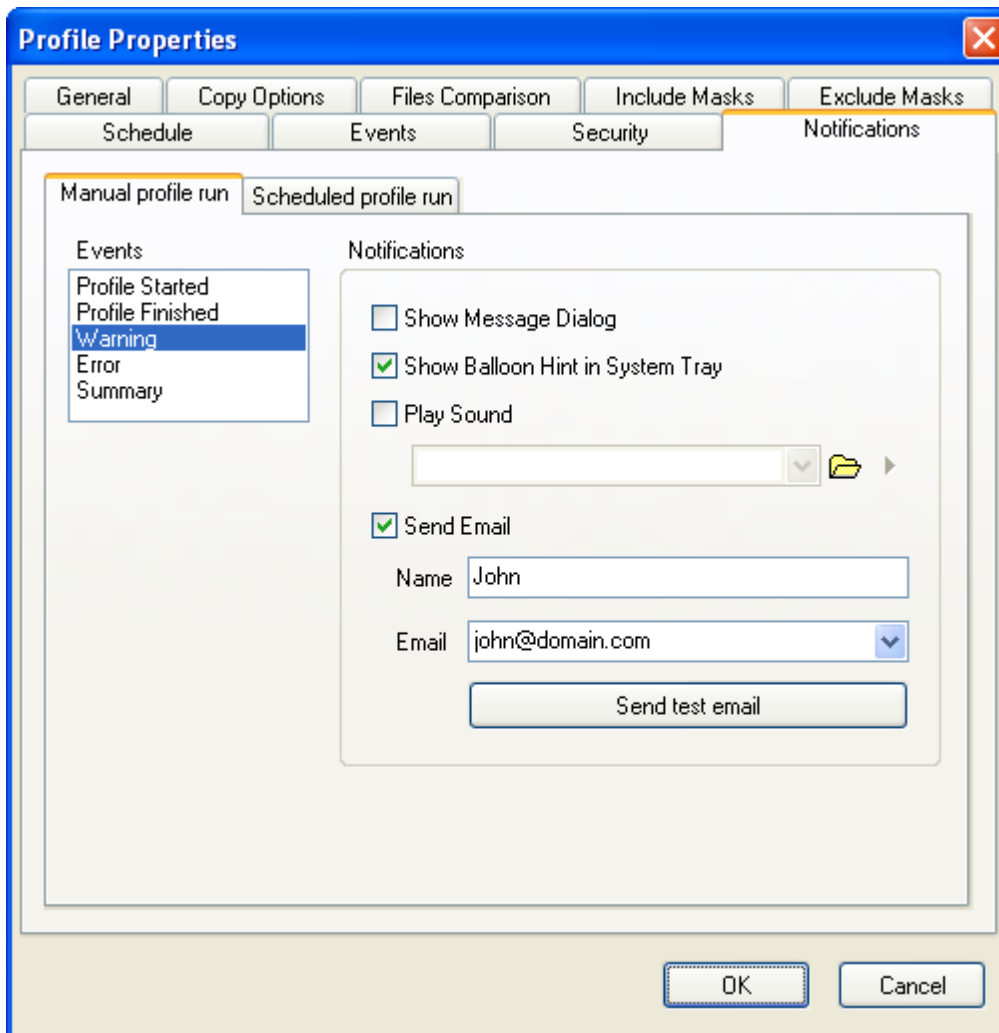
Use the Security page of the Profile Properties dialog box to specify restrictions on accessing and running profiles.

Allow to modify this profile for selected users only

Check this box to restrict access to the profile for selected users.

User List	Specifies the list of users allowed to access and run the profile.
Add	Add a user name to the list. A user name is the Windows login name of the user.
Delete	Deletes a selected user name from list.
Import	Import user names from a text file. The file should contain one user name per line.
Password to access	Set a password to run and change the profile. If you set an empty password the profile can be run by selected users only. If you forget the password, it cannot be recovered.
Retype password	Re-enter the password for verification.

3.3.10 Notifications



Use the Notification page of the Profile Properties dialog box to control the program's behavior when various events occur, for example you can select the sound that will be played when a backup project is started or completed, or a critical error occurs etc...

Notification page contains two tabs to set a different set of notifications for:

Manual Profile Run - for projects, which were started manually.

Scheduled Profile Run - for projects, which were started automatically by a built-in [scheduler](#).

Events

- **Profile Started** - notify the launching of the profile.
- **Profile Finished** - notify the completion of the profile.
- **Warning** - notify about every warning which is occurred during the profile execution.
- **Error** - notify about critical error which is occurred during the profile execution.
- **Summary** - send an entire log for the last profile execution.

Notifications

- **Show Message Dialog** - shows modal dialog.
- **Show Balloon Hint in System Tray** - shows yellow balloon hint near the tray.
- **Play Sound** - plays specified sound file.

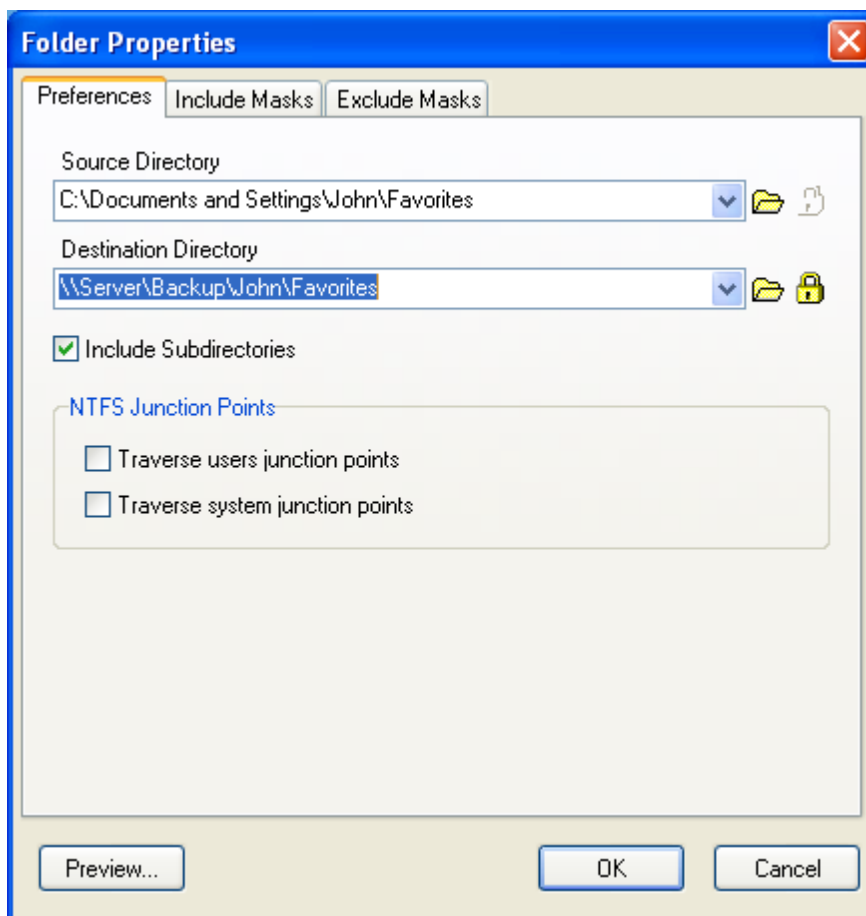
- **Send Email** - send information to the specified email. If you want to send notification to several emails then separate email addresses by a semicolon.

3.4 Folder Properties

Folder Properties dialog contains the following pages:



- [Preferences](#)
- [Include Masks](#)
- [Exclude Masks](#)

3.4.1 Preferences



Use the Preferences page of the Folder Properties dialog box to specify source directory, destination directory and to specify how to process subfolders and folder links.



Source Directory

Specify the full path of the directory containing the files you want to synchronize. You can also use the  button to select a directory. Environment variables can also be used in the directory path. Click the  button if you need to connect to a network drive with a different user name and password or if you want to set how to identify removable disks.

Folder Name

Specify a unique folder name. This field available for [Remote Synchronization](#) and operations with compression.

Destination Directory

Specify the full path of the directory containing the files you want to synchronize. You can also use the  button to select a directory. Environment variables can also be used in the directory path. Click the  button if you need to connect to a network drive with a different user name and password or if you want to set how to identify removable disks.

Include Subdirectories

Check this box to copy files from all of the sub directories in the source/destination location.

NTFS Junction Points

In Windows Vista, Windows Server 2008, Windows 7 and Windows Home Server 2011, the default locations for user data and system data have changed. For example, user data that was previously stored in the %SystemDrive%\Documents and Settings directory is now stored in the %SystemDrive%\Users directory. For backward compatibility, the old locations have junction points that point to the new locations. So if you want to prevent duplication of the user files then uncheck both options.

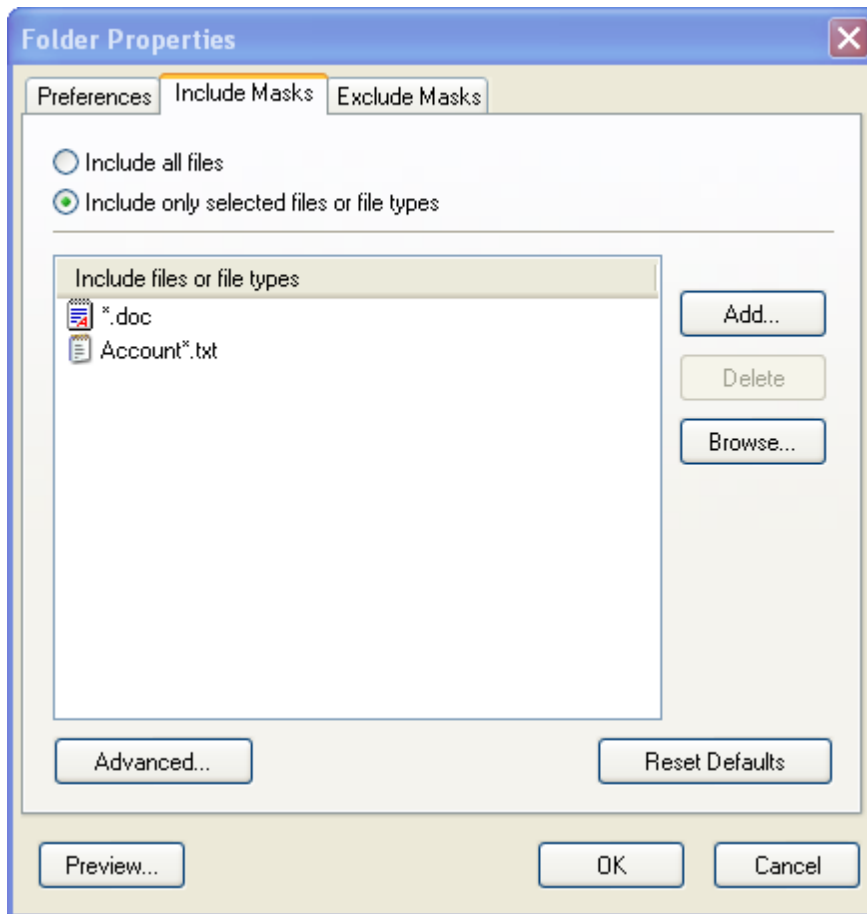
Preview

Opens the [Preview Files](#) dialog box showing the list of all files matching the selected criteria.

Notes for Windows 7/Vista/XP/2000/2003/2008/Home Server 2011:

If either side of a synchronization is on a volume with folders available offline, SmartSync Pro cannot properly determine whether the volume is online or not. To avoid this problem, do not use SmartSync Pro with volumes that contain folders available offline.

3.4.2 Include Masks



Use the Included Masks page of the Folder Properties dialog box to specify which files to synchronize.

Include All Files

Select this option to include all files in source folders.

Include only selected files or file types

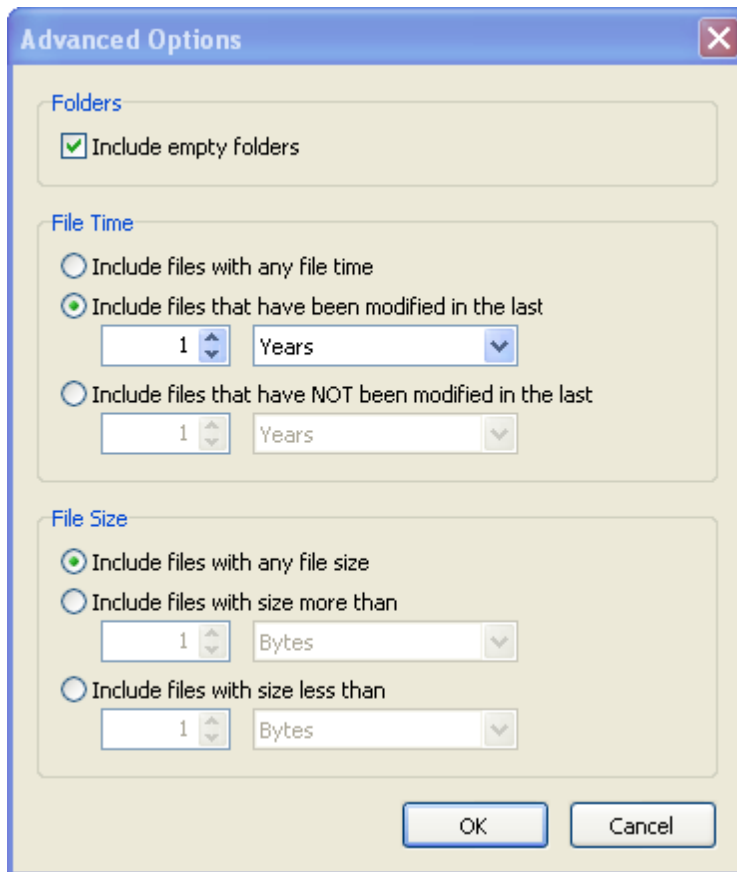
Select this option if you want to include only specified files and file types.

Include files or file types

Specify a list of files and file masks to include in the synchronization process. Press **Add** button to add new file name or file mask to the list. Press **Delete** button to delete selected items from the list. Press **Browse** button to open dialog to select any existing file.

Advanced

Click this button to open an advanced options.



Include empty folders - synchronizes empty folders. If the folder contains only files which are excluded by other criteria then this folder is also considered as empty.

File Time

Include files with any file time - does not filter files by time.

Include files that have been modified in the last - include only files with the last modification date within the specified period.

Include files that have NOT been modified in the last - include only files with the last modification date older than a specified period.

File Size

Include files with any file size - does not filter files by size.

Include files with size more than - include only files with the size more than the specified size.

Include files with size less than - include only files with the size less than the specified size.

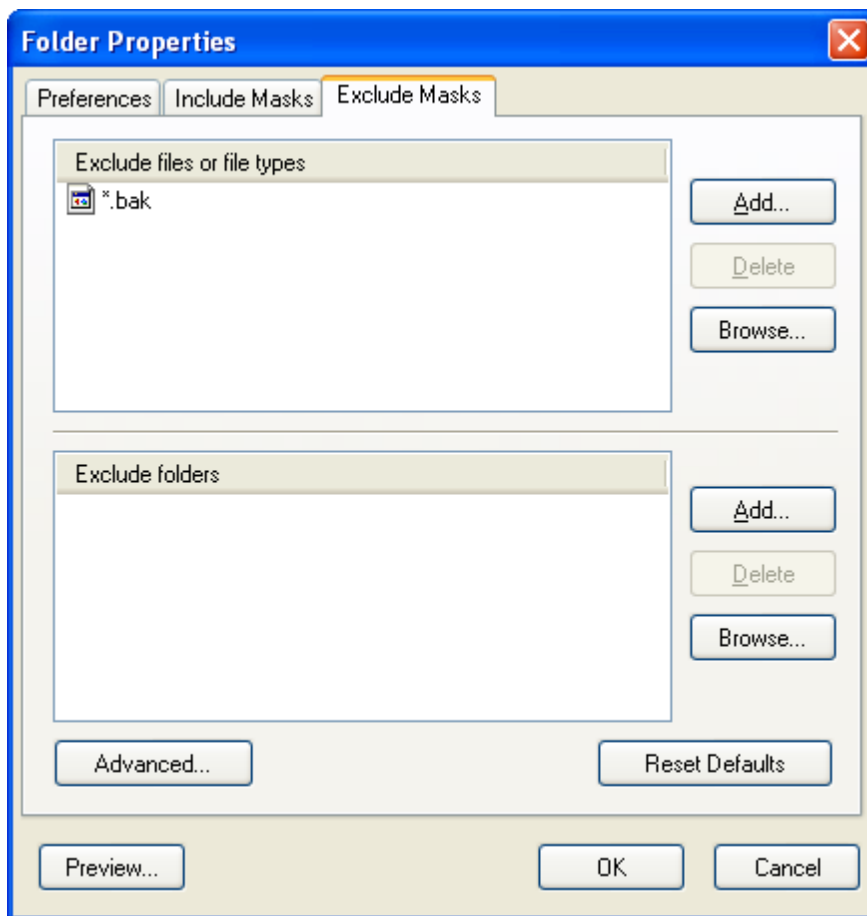
Reset Defaults

Press this button to discard changes and load include masks from the [profile settings](#).

Preview

Opens the [Preview Files](#) dialog box showing the list of all files matching the selected criteria.

3.4.3 Exclude Masks



Use the Excluded Masks page of the Folder Properties dialog box to specify what files or directories you want to exclude from synchronization.

Excluded files or file types

Specify files to exclude from synchronization. Press **Add** button to add new file name or file mask to the list. Press **Delete** button to delete selected items from the list. Press **Browse** button to open dialog to select any existing file.

Excluded folders

Specify directories to exclude from synchronization. Press **Add** button to add new folder to the list. Press **Delete** button to delete selected items from the list. Press **Browse** button to open dialog to select any existing folder.

Advanced

Exclude file if exists - specifies special conditions to exclude files if there are files with the same name, but with a different extensions. For example if you specify **.dcu* in the Mask field and *pas* in the Extension field then SmartSync Pro will excluded each file with *dcu* extension if there is a file with the same name, but with *pas* extension in the same folder.

File Attributes - you can exclude files by its attributes. For example you can exclude system and hidden files.

Note

- If you want to exclude all subfolders with name Doc then specify "Doc" in **Excluded folders**.
- If you want to exclude only root folder Doc and include all subfolders Doc like "My Job\Doc" then specify "Doc\".
- If you want to exclude only subfolders Doc and include root folder Doc then specify "*\Doc".

Reset Defaults

Press this button to discard changes and load exclude masks from the [profile settings](#).

Preview

Opens the [Preview Files](#) dialog box showing the list of all files matching the selected criteria.

3.5 Synchronization Parameters

Depends on the [synchronization type](#) Synchronization Parameters contains the most important profile options.

Synchronization Types

- Synchronize with a local/network computer
- Synchronize with a remote computer

3.6 System Tray Icon

The System tray Icon will appear when you launch SmartSync Pro. It has the following appearance:



Idle state. SmartSync Pro does nothing.



Processing State. The program executes some profiles.



Error state. Some profiles finished with errors.



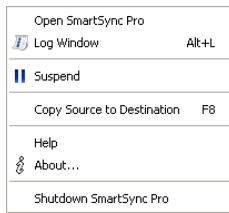
Suspended state. The program is in suspended state. All running profiles have been suspended. Choose Resume command from the tray menu to continue profiles execution.

When you start Windows SmartSync Pro will automatically be launched in the system tray. To change this behaviour go to the program [Options](#), if you uncheck **Start at log in** then SmartSync Pro will only start when you manually start it.

Note

If SmartSync Pro is not running in the system tray scheduled synchronizations will not occur.

You can open SmartSync Pro's main window from the system tray by left clicking on the icon. The system tray icon has a menu with features that can be used whether the SmartSync Pro's main window is open or not.



Open SmartSync Pro - opens SmartSync Pro.

Log Window - opens the program activity log.

Suspend - pauses all executing profiles. **Resume** - resumes execution of a paused profiles.

Copy Source to Destination - begins synchronization process for the selected profile or profile group.

Help - displays the online help system.

About - displays program and copyright information.

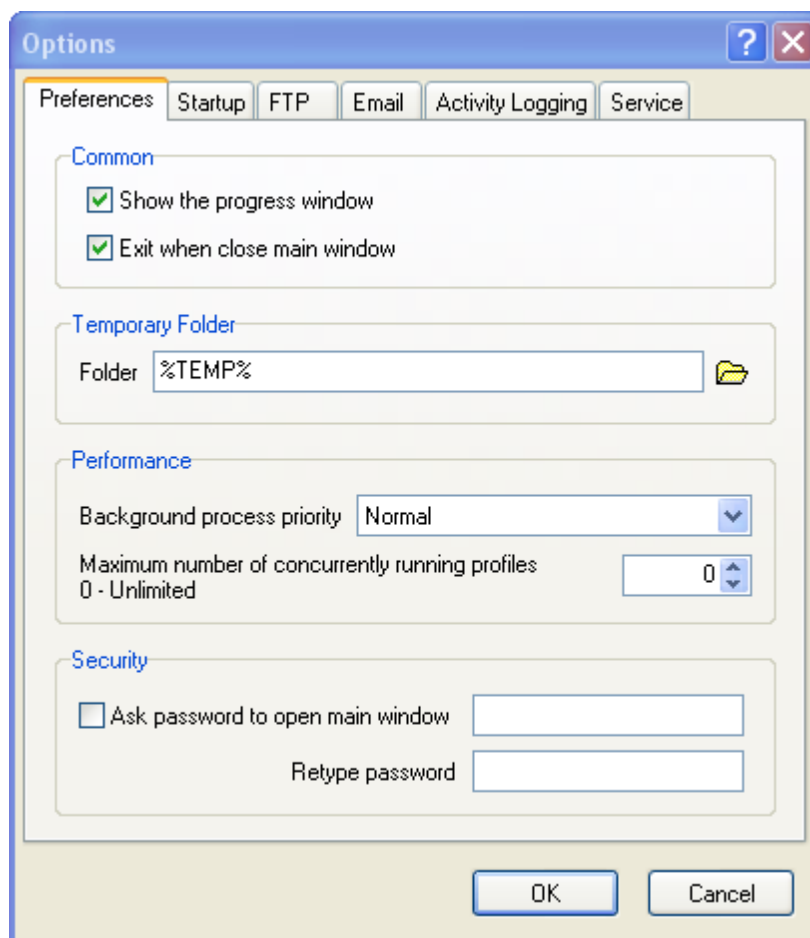
Shutdown SmartSync Pro - shuts down SmartSync Pro.

3.7 Options

Options dialog contains the following pages:

- [Preferences](#)
- [Startup](#)
- [FTP](#)
- [Email](#)
- [Activity Logging](#)
- [Service](#)

3.7.1 Preferences



Use the Preference page of the Options dialog box to set common options for the program.

Show the Progress Window

Check this to see progress reports during synchronization.

Exit when Close Main Window

Check this to exit program when the main window is closed. Otherwise, SmartSync Pro closes the main window but continues running in the system tray.

Temporary Folder

Specify a location where the program can create temporary files.

Background process priority

Specifies the priority of each synchronization process.

Maximum number of concurrently running profiles

If greater than zero, be the maximum number of simultaneous profiles which can concurrently run. This would be used to limit the number of processes where too many could flood a system, causing performance issues.

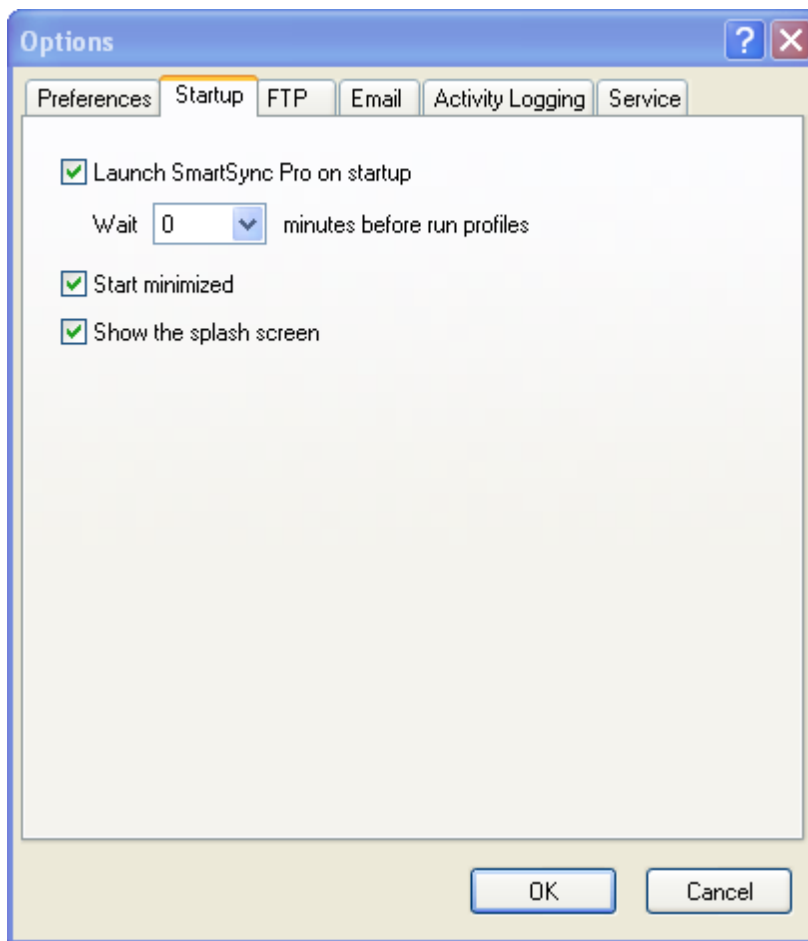
Ask password to open main window

Check this box if you want to protect program settings from changing by unauthorized users.

Retype Password

Re-enter the password for verification.

3.7.2 Startup



Use the Startup page of the Options dialog box to set startup options for the program.

Launch SmartSync Pro on startup

Check this box to start SmartSync Pro when you log in.

Wait xxx minutes before run profiles

Sets a number of minutes to delay after program loading before starting profiles to minimize performance degrade.

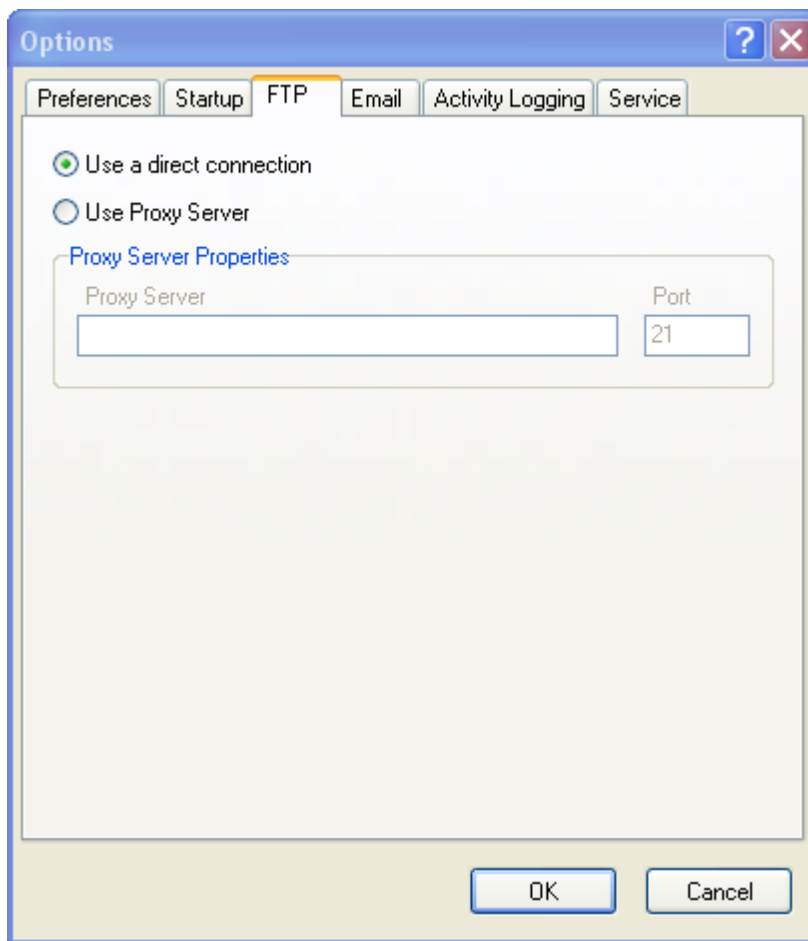
Start minimized

Starts the program as an icon on the system tray. Uncheck it to see the main window when SmartSync Pro starts.

Show the splash screen

Shows the splash screen at startup.

3.7.3 FTP



Use the FTP page of the Options dialog box to set FTP host options. SmartSync Pro can use an FTP host as an intermediate storage location in [Remote Synchronization](#) mode.

Use a Direct Connection

Uses a direct connection to FTP hosts.

Use Proxy Server

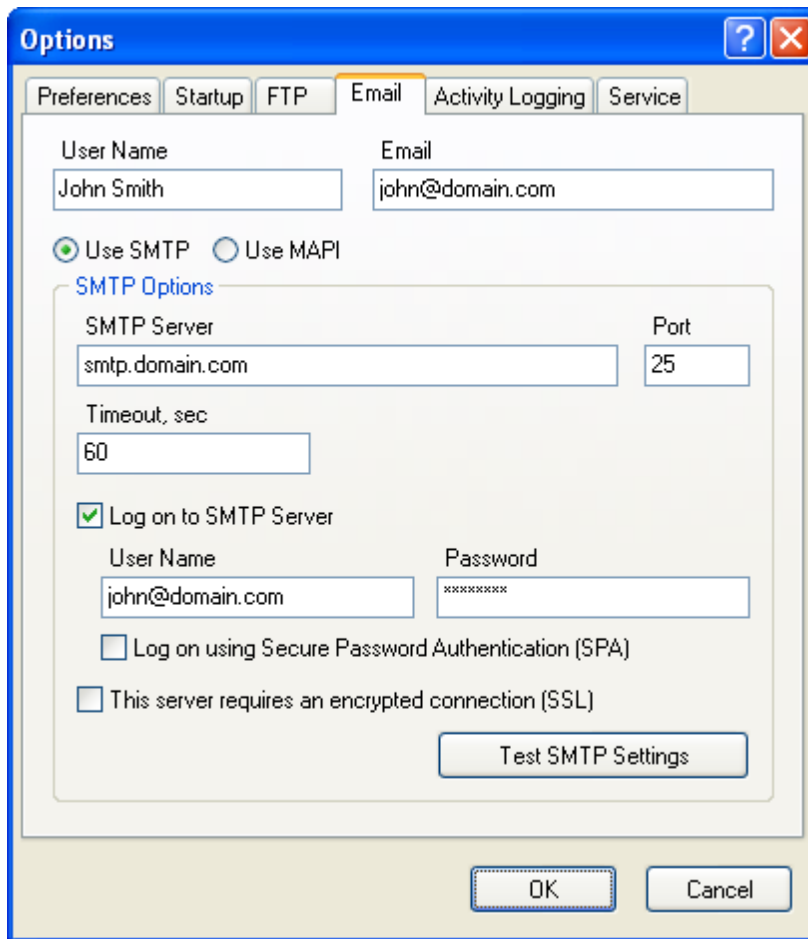
Connects to FTP hosts using a proxy server.

Set Proxy Server Properties:

Address - proxy server address.

Port - proxy server port. Default value is 21.

3.7.4 Email



The screenshot shows the 'Options' dialog box with the 'Email' tab selected. The 'User Name' field contains 'John Smith' and the 'Email' field contains 'john@domain.com'. The 'Use SMTP' radio button is selected, and the 'Use MAPI' radio button is unselected. The 'SMTP Options' section is expanded, showing the 'SMTP Server' field with 'smtp.domain.com' and the 'Port' field with '25'. The 'Timeout, sec' field contains '60'. The 'Log on to SMTP Server' checkbox is checked, and the 'User Name' field contains 'john@domain.com' and the 'Password' field contains '*****'. The 'Log on using Secure Password Authentication (SPA)' checkbox is unselected, and the 'This server requires an encrypted connection (SSL)' checkbox is unselected. A 'Test SMTP Settings' button is located at the bottom of the 'SMTP Options' section. The 'OK' and 'Cancel' buttons are at the bottom of the dialog box.

Use the Email page of the Options dialog box to set email options. SmartSync Pro can send [packages](#) using SMTP or MAPI protocol and can receive packages directly from POP3 mailboxes.

User Name

Specify a user name in the From field of an email.

Email

Specify an email address in From field of an email.

Use SMTP

Check this box if you want to send [packages](#) as attachments through an SMTP server.

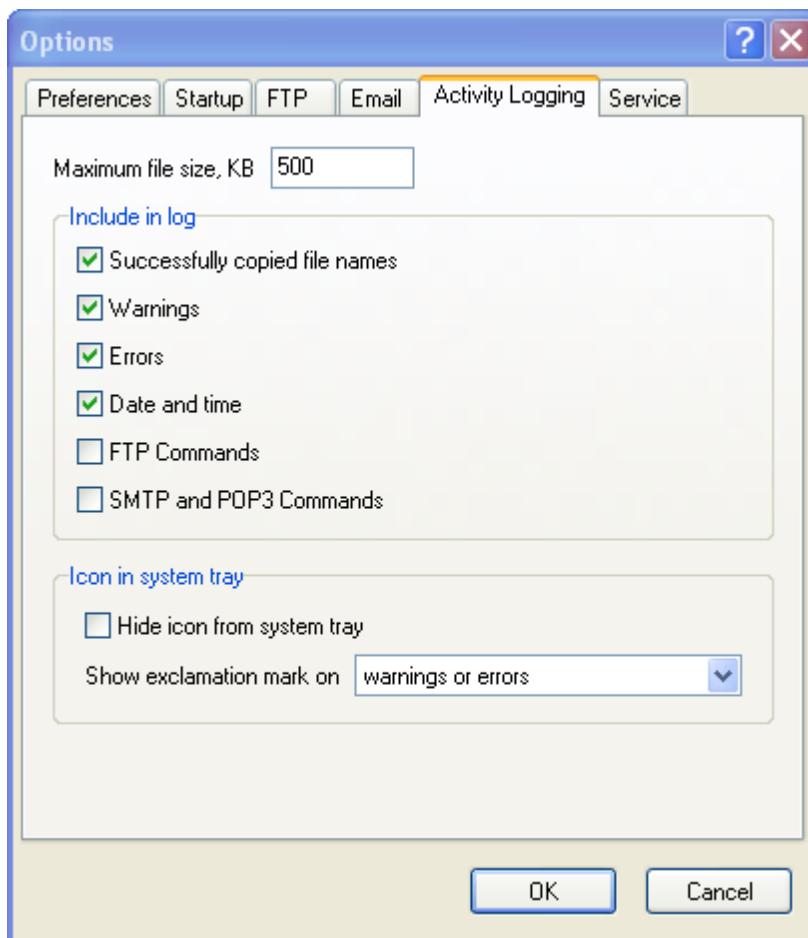
Menu Item	Description
SMTP Server	Specify the SMTP server's address.
Port	Specify SMTP port (default 25).
Timeout, sec	Specify your SMTP server timeout.
Logon to SMTP Server	Check this if your SMTP server requires a logon.
User Name	Specify a user name for logon.
Password	Specify a password for logon.
Log on using Secure Password Authentication (SPA)	Check this option if your SMTP server requires SPA.
This server requires an encrypted connection (SSL)	Check this if your SMTP server requires encrypted connection. For example: MSN, GMail.
Test SMTP Settings	Press this button to verify specified settings.

Use MAPI

Check this if you want to send [packages](#) as attachments using MAPI protocol. Your email client must support MAPI.

Menu Item	Description
Prompt for MAPI Profile	Check this box to select MAPI profile before send email.
Profile	Specify profile name if you want to use a special profile.
Password	Specify a password to log on to specified MAPI profile.

3.7.5 Activity Logging



Use the Activity Logging page of the Options dialog box to define which information you want to see in the log.

Maximum file size

Before every profile execution SmartSync Pro checks existing log file size. If it is larger than specified value then it is renamed to .bak and starts new log file.

Successfully copied file names

Includes all processed file and folder names. If not checked then just a profile execution summary is included.

Warnings

Includes warnings to log file.

Errors

Includes critical errors to log file.

Date and time

Include date/time stamp at the beginning of each line.

FTP Commands

Includes all FTP commands which are sent and received to FTP server.

SMTP and POP3 Commands

Includes all SMTP/POP3 commands which are sent and received to SMTP/POP3 server.

Icon in system tray

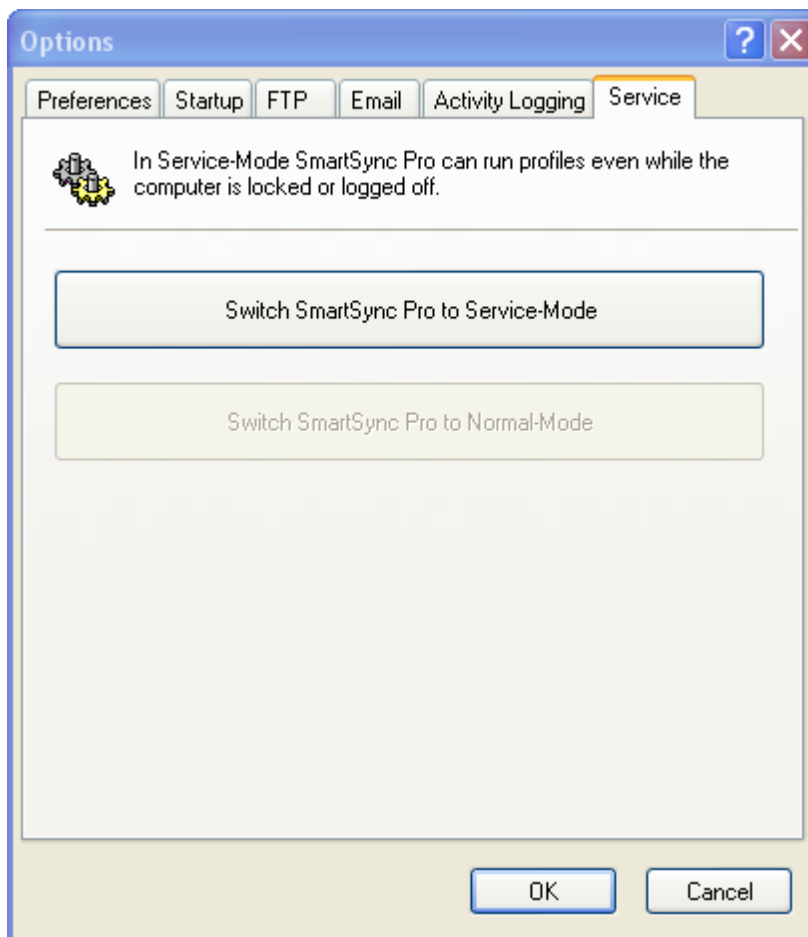
Hide icon from system tray - hides program icon from system tray. If you want to open main window then double click on the SmartSync Pro desktop icon.

Show exclamation mark on - defines when icon in system tray should show an exclamation mark.

Warnings or errors - shows an exclamation mark if at least one profile has warnings or errors during last synchronization.

Errors only - shows an exclamation mark if at least one profile has errors during last synchronization.

3.7.6 Service



Use the Service page of the Options dialog box to switch program mode from Service-Mode to Normal-Mode and vice-versa.

Switch SmartSync Pro to Service-Mode

Press this button to install SmartSync Pro as a service, close SmartSync Pro and start it in service mode.

Switch SmartSync Pro to Normal-Mode

Press this button to stop SmartSync Pro service, uninstall the service and restart SmartSync Pro in normal mode.

Note:

The Service page is accessible for administrators.

3.8 New Profile Wizard

New Profile Wizard guides you through the steps needed to create new profile:

- [Welcome.](#)
- [Select folders to synchronize.](#)
- [Folder properties.](#)
- [Include files.](#)
- [Exclude files.](#)
- [Schedule.](#)
- [Wizard completed.](#)

3.8.1 Welcome

The first step is to define what you want to backup or synchronize and how.

What do you want to synchronize?

SmartSync Pro provided several predefined templates for frequently used profiles, such as My Documents, My Favorites, etc. Check the box near template name you want to use.

I will select folders manually

If you prefer to choose folders manually you can do so during the next wizard step.

Synchronization Type:

Synchronize with remote computer

Choose this type if you want to synchronize files on two or more computers that you can't connect through a local network. It's an ideal solution if you use the same files both at home and in the office or if you want to synchronize computers via email or FTP.

Synchronize with local/network computer

Choose this type if you want to backup your important files from your hard drive to another location such as removable media, like ZIP or JAZ drives, or to a network volume. Select the operation you want to perform on your files. It can be one of the following:

- Copy Source to Destination. You can also delete obsolete files from the destination directory.
- Move Source to Destination. All files matched your criteria will be moved to the destination folder.
- Synchronize Source and Destination. You can also synchronize file deletions.
- Compress Source into a single ZIP file. You can also delete obsolete files from the destination ZIP file.

- Incremental Backup (with compression).

Click the **Preview** button to show which files you have selected for synchronization.

3.8.2 Select Folders for Synchronization

Select the folders/files you want to backup/synchronize.

The **Available Folders** shows a typical windows explorer tree. To select a folder for backup/synchronize, check the box to the left of the appropriate icon. A check will appear in the box after it has been selected. SmartSync Pro scans selected folders and shows the files statistics in a **Total Statistics** group.

Selected folders are added to the **Selected Folders** list. The right column of the **Selected Folders** list contains check boxes. If you want to backup/synchronize all of the subdirectories within a selected directory check this box, if you don't want to then uncheck it.

Press **Add** button to add folder or files manually.

Press **Delete** button to delete selected item from the list.

Click the **Preview** button to show which files you have selected for synchronization.

3.8.3 Folder Properties

Specify folder properties for each selected folder. Depending on the selected [synchronization type](#) and operation this page may contain a combination of the following controls:

Use common destination folder and append folder name

Use this option if all of your source folders should be synchronized with the subfolders of the common destination folder. For example if have common destination folder E:\Backup and want to sync:

C:\Folder1 to E:\Backup\Folder1

C:\Folder2 to E:\Backup\Folder2

etc.

Use own folder for each source

Use this option if you want to specify separate destination folder for each source folder.

For example:

C:\Folder1 to E:\Backup\Folder1

C:\Folder2 to \\Server\Share\Folder2

etc.

Folder Name


Specifies a folder name that should be unique within the profile.

For example: A source directory "C:\My Documents" may have a folder name "My Documents".


Destination Folder

Type the full path of a directory where the files should be copied to. Environment variables can also be used in the directory name.

For example: A folder on your computer may be named: "C:\Backups" or a folder on another

computer on the network may be named: "\\DocServer\Shared\Daily archives". Click the  button if you need to connect to a network drive with a different user name and password.

Note

You can also use  button to select a folder from a list.

Click the **Preview** button to show which files you have selected for synchronization.

3.8.4 Include Files

Specify which files you want to backup/synchronize.

Folders

The list of folders you have selected for synchronization. - **Profile Options** - adjusts the common settings for all folders in the profile. You may modify settings for each folder.

Include all files

Select this option to include all files from source folders.

Include only selected files or file types

Included files or file types - specifies a list of file names and file masks to synchronize. Use the **Add** button to add file name or file mask to the list. Use the **Delete** button to delete selected rows. Press **Browse** button to select files on the disk.

Advanced

Click this button to open an advanced options.

Include empty folders - synchronizes empty folders. If the folder contains only files which are excluded by other criteria then this folder is also considered as empty.

File Time

Include files with any file time - does not filter files by time.

Include files that have been modified in the last - include only files with the last modification date within the specified period.

Include files that have NOT been modified in the last - include only files with the last modification date older than a specified period.

File Size

Include files with any file size - does not filter files by size.

Include files with size more than - include only files with the size more than the specified size.

Include files with size less than - include only files with the size less than the specified size.

Reset Defaults

Press this button to discard changes and load include masks from the profile options.

Click the **Preview** button to show which files you have selected for synchronization.

3.8.5 Exclude Files

Specify which files you want to exclude from backup/synchronization.

Folders

The list of folders you have selected for synchronization. - **Profile Options** - adjusts the common settings for all folders in the profile. You may modify settings for each folder.

Exclude files or file types

Specifies the files and file types you want to exclude from backup/synchronization. The **Exclude files or file types** table shows the current list of file types you want to exclude. Use the **Add** button to add file name or file mask to the list. Use the **Delete** button to delete selected rows. Press **Browse** button to select files on the disk.

Exclude folders

Specify directories to exclude from synchronization. Press **Add** button to add new folder to the list. Press **Delete** button to delete selected items from the list. Press **Browse** button to open dialog to select any existing folder.

Advanced

Exclude file if exists - specifies special conditions to exclude files if there are files with the same name, but with a different extensions. For example if you specify **.dcu* in the Mask field and *pas* in the Extension field then SmartSync Pro will excluded each file with *dcu* extension if there is a file with the same name, but with *pas* extension in the same folder.

File Attributes - you can exclude files by its attributes. For example you can exclude system and hidden files.

Note

- If you want to exclude all subfolders with name Doc then specify "Doc" in **Excluded folders**.
- If you want to exclude only root folder Doc and include all subfolders Doc like "My Job\Doc" then specify "Doc\".
- If you want to exclude only subfolders Doc and include root folder Doc then specify "*\Doc\".

Reset Defaults

Press this button to discard changes and load exclude masks from the [profile settings](#).

Click the **Preview** button to show which files you have selected for synchronization.

3.8.6 Schedule

Specify when you want the profile to run.

Select desired frequency.

Frequency	Description
Manual Start	Select Manual Start if you do not want SmartSync Pro to synchronize files automatically. Once setup, you can manually run the profile from the main window as needed.
Every Few Minutes	Run the profile every few minutes. You may select an interval in minutes, a start date and a start time.
Every Few Hours	Run the profile every few hours. You may select an interval in hours, a start date and a start time.
Every Day	Run the profile every few days. You may select an interval in days, a start date and a start time.
Every Week	Run the profile every few weeks. You may select an interval in weeks, a start date and a start time.
One Time Only	Run the profile once, at the specified time. You may select start date and start time.

Note: For the **Every Few Minutes** and **Every Few Hours** frequency, the profile will run from Start Time up to 11:59 PM by default. If you setup an End Time in the Advanced Options then the profile will run up to the End Time.

In addition to a setting the profile run frequency, you can also choose to run the profile at Windows startup and Windows shutdown.

Also Run At	Description
Windows Startup	Run the profile at Windows startup.
Windows Shutdown	Run the profile before Windows shutdown.
On Folder Changes	Run the profile if any file in the source directory is modified. This option makes for practically real-time backups (with a 5-second delay), which is useful if a profile requires an especially fast refresh of the backup copy.
On Disk Insertion	

If you do not want to run profiles on some days, you can specify them in the **Do not run on these days** group.

Wait for profile

Check this box and select the profile from the list if you want to execute the profile right after the finish of the selected profile.

Click the **Advanced** button to open the Advanced Options dialog to set additional scheduling options.

3.8.7 Wizard Completed

The last step is to set profile name. Enter a suitable name to identify this profile.

Setup Additional Parameters after Pressing Finish button

Check this box if you want to setup all profile properties.

Click the Finish button to close the New Profile Wizard.

3.9 Restore Wizard

Restore Wizard allows you to restore one or any source files from a backup copy.

1. [Select backup files.](#)
2. [Select destination folders.](#)
3. [Select files to restore.](#)

3.9.1 Select Backup Files

This page shows you all backup files in the Destination Folder which were created for the current profile. A full backups have a symbol "#" at the end of file name. Mark backup files you want to use.

Select All

Click this button to select all available backup files.

Deselect All

Click this button to deselect all backup files.

Delete

Click this button to delete selected file from disk.

Check the Integrity of Backup Files

Check this box if you want to verify data integrity of all selected backup files. This may takes some times to process.

When you click the **Next** button the Wizard will check data integrity of all marked backup files.

Note: This page available for "Compress source into a single zip file" and for "Incremental Backup (with compression)" operations.

3.9.2 Select Destination Folders


This page shows you all folders in the marked backup files. Select which folders do you want to restore and a path for each folder.

Select All

Click this button to select all folders.

Deselect All

Click this button to deselect all folders.

Click the  button to browse for the destination folder.
Click the **Back** button to select or deselect backup files.
Click the **Next** button to mark which files you want to restore.

3.9.3 Select Files to Restore

This page shows you the full list of files from selected backup files. Select files you want to restore.

Select All

Click this button to select all files to restore.

Deselect All

Click this button to deselect all files.

By Date

Click this button to mark files by a specified date range.

Select the latest versions to date - Use this option to select the latest versions of the files to the specified date and time. This will allow you to restore original state of your source folders to a given moment.

Selected date range - Allows you to select files within the specified date/time range.

View...

Click this button to open selected file and view its content.

Find

Finds file/folder by name.

Show deleted files

Shows the files that were deleted.

Click the **Back** button to modify destination folders.

Click the **Finish** button to restore selected files.

3.10 Compare Files

The Compare Files dialog box displays the list of files. New files appear in blue, modified files are in green, deleted files are marked with a strike-out and conflict files are in red.

Menu Item	Description
All Files	Press this button to show all files.
New	Press this button to show files that were created since the last synchronization.
Modified	Press this button to show modified files.
Deleted	Press this button to show deleted files.
Conflicts	Press this button to show file conflicts.
Filter	Switches on/off filtering by file extension.
Files List	Shows the files and folders list.
Close	Closes the dialog.
Run Now	Closes the dialog and run the current profile.
Clear	<p>Remote Synchronization: Clears remote files list. All local files are treated as new and will be included in the package.</p> <p>Synchronize source and destination: Clears a list of synchronized files. All files which are exist on one side only will be treated as new.</p>
Reset	Resets remote files list to the local ones. All remote files will be treated as up to date.
Find	Opens Find Text dialog to look for a file name in the list.
Show Grid	Overlays a grid on the list.

3.11 Connection Security

The Connection Security dialog is used if the path is a network drive and you need to connect to the remote computer using a specified user name and a password.

Connect to a Network Resource

Connect to a network drive using a specified user name and a password.

User Name

Specifies a user name.

Password

Specifies a password.

Test

Press this button to try to connect to the network drive using specified user name and password.

3.12 Interface Language

SmartSync Pro supports multi-language interface.

If your language is not listed in the menu View | Language you can add your language there. Just [send us an email](#) that you want to make a localization. We will send you an instructions how to do that and give you **3 SmartSync Pro copies for free!**

4 How to...

How to...

- [Backup files](#)
- [Restore files](#)
- [Synchronize files via LAN](#)
- [Synchronize files between remote computers](#)
- [Run SmartSync Pro as a service](#)
- [Use command line options](#)
- [Backup to CD/DVD](#)

4.1 How to Backup Files

Use the following steps to backup your important data.

- Choose menu File | New | Profile. The [New Profile Wizard](#) will open.
- On the first page of the Wizard choose **Synchronize with Local/Network Computer**.
- Choose which operation you wish to perform: **Copy source to destination, Move source to destination, Compress source into a single ZIP file** or **Incremental Backup (with compression)**.
- Click the Next button and fill in all of the other pages of the wizard to define which files you want to backup, where and when.
- If you set schedule to [Manual Start](#) then press F5 key to start the backup process.
- If you set schedule to run the profile at a specified time then minimize SmartSync Pro and it will run the profile for you.

4.2 How to Restore Files

Use the following steps to restore your important data.

Restoring from a destination folder

- Use these steps if you backup files using **Copy Source to Destination** or **Move Source to Destination** operations.
- Select the profile in the profiles tree.
- Select menu **Sync | Restore**.
- The [Restore Wizard](#) will open.
- Perform all steps in the wizard.

Restoring from a ZIP archive

- If you have a profile which was used to create a zip archive then select that profile in the profiles tree, select menu **Sync | Restore**. If you have lost that profile select menu **Sync | Create New Profile and | Restore Source from a ZIP file** and select a ZIP file.
- The [Restore Wizard](#) will open.
- Perform all steps in the wizard.

Restoring from an Incremental Backup

- If you have a profile which was used to create an incremental backups then select that profile in the profiles tree, select menu **Sync | Restore**. If you have lost that profile choose menu **Sync | Create New Profile and | Restore Source from Incremental Backup** and select any of your backup files.

- The [Restore Wizard](#) will open.
- Perform all steps in the wizard.

4.3 How to Synchronize Files via LAN

Use the following steps to setup bidirectional synchronization of your files.

- Choose menu File | New - Profile. The New Profile Wizard will open.
- On the first page of the Wizard choose **Synchronize with Local/Network Computer**.
- Choose the operation **Synchronize Source and Destination**.
- Click the Next button and fill in all of the other pages of the wizard to define which files you want to synchronize and when.
- If you set schedule to [Manual Start](#) then press F5 key to start the synchronization process.
- If you set schedule to run the profile at specified time then minimize SmartSync Pro and it will run the profile for you.

4.4 How to Synchronize Files between Remote Computers

SmartSync Pro has a unique feature: files synchronization between computers that are not connected through a local network. Use the following steps to synchronize files.

On the first computer

- Choose menu File | New - Profile. The [New Profile Wizard](#) will open.
- On the first page of the Wizard choose **Synchronize with Remote Computer**.
- Click the Next button and fill in all of the other pages of the wizard to define which files you want to synchronize and when.
- Choose the transfer package method.
- Choose menu Sync | Synchronize. SmartSync Pro scans source directories for targeted files and compresses them into a package. The program then copies the package to disk, email or FTP depending on the transfer method you have selected.

On the second computer

- If you choose transfer package using Email or FTP then download the package using your Email or FTP client. This operation only needs to be performed once.
- Choose menu Sync | Create New Profile and | Apply Updates . SmartSync Pro will ask you to select the package and press the Open button.
- The program creates a new profile using information from the package.
- The Destination Folders dialog box will open. Enter destination directory for every folder and press the OK button.
- SmartSync Pro will begin extracting files from the package. Wait until the process completes.
- Now you can choose the transfer package method for the created profile.

Both computers are ready for two-way synchronization.

When you choose menu Sync | Synchronize SmartSync Pro will try to load package from remote computer, apply it and then create package for the local computer.

4.5 How to run SmartSync Pro as a service under Windows NT/2000/XP/Vista?

The program can be run as a service under Windows 7/Vista/XP/2000/2003/2008/Home Server 2011 (x86 and x64).

To install the service

You should have the rights of administrator to install SmartSync Pro as a service.

- Choose menu View | Options and switch to page Service.
- Press the button "Switch SmartSync Pro to Service-Mode".

SmartSync Pro will install the service, close SmartSync Pro and start the service.

To uninstall the service

You should have the rights of administrator to uninstall SmartSync Pro.

- Choose menu View | Options and switch to page Service.
- Press the button "Switch SmartSync Pro to Normal-Mode".

SmartSync Pro will stop the service, uninstall the service and restart SmartSync Pro in normal mode.

Note:

The main advantage of using the service is that profiles can be run even **if the user is not logged**.

4.6 How to use command line options?

You can run SmartSync Pro with the following command line options:

Option	Description
/? or /Help	Show this help window
/Exit	Exits application, wait for idle if busy
/ExitNow	Exits application immediately
/ShowAboutBox	Show the About Box
/Show	Show the main window
/ShowLog	Show the Log window
/Suspend	Suspends all profiles
/Resume	Resumes all profiles
/RunAll	Runs all profiles
/RunProfile=ProfileName	Run specified profile
/RunGroup=GroupName	Runs all profiles in a specified group

Examples:

SmartSync.exe /RunProfile=Backup /RunProfile="Daily BackupsMy Documents"

Command line will start profile with name **Backup** and profile **"My Documents"** from the group **"Daily Backups"**.

SmartSync.exe /RunProfile="My Documents" /RunGroup=Backup /Exit

Command line will start profile with name **"My Documents"**, all profiles within group **"Backup"** and will exit SmartSync Pro when all profiles are finished working.

4.7 How to backup to CD/DVD

Backups to CD/DVD are done via the Packet Writing interface to your CD/DVD drive.

Examples of Packet writing interfaces are:

- Roxio DirectCD (Drag-to-Disc)
- Nero InCD

Windows Vista and older supports **Live File System**. A file storage system that can be used to create CDs and DVDs. Discs formatted with Live File System allow you to copy files to the disc at any time, instead of copying (burning) them all at once.

5 Ordering, Registration and Support

Ordering, Registration and Support:

- [How to Register?](#)
- [After Registration](#)
- [Contact Information](#)

5.1 How to Register?

To purchase SmartSync Pro, visit the Registration section of our Web site at <http://www.smartsync.com/order/>. After purchasing you will receive a registration key via email.

Web-site: <http://www.smartsync.com/>

5.2 After Registration

When you receive your registration information (license number) you must enter it into the program. To enter your registration information, please perform the following steps:

- Run SmartSync Pro.
- Choose Menu Help, option Registration.
- The Registration Key dialog will open.
- Switch to your email client and find the email with the registration information.
- Right-click the message to display the popup menu. Select the Select All command there. The menu will disappear, and the message will change its color (become selected). Then display the popup menu again and select the Copy command.
- Switch to SmartSync Pro. If the registration code has not appeared in the edit box automatically then press the Paste button.
- After the registration information has entered, press the OK button.
- SmartSync Pro will prompt you to restart the program. Press the OK button.
- If your data was entered correctly, SmartSync Pro will now be registered to the code you entered and your name will be displayed in the About box.
- You are now the lawful owner of the program.

Note

Be sure to save your registration information in a safe place. You will need it again if you reinstall Windows. Better safe than sorry.

Note

Don't give your registration information to others. Please review the License Agreement for details.

5.3 Contact Information

Technical Support

Registered users are entitled to technical support, should the need arise. Please contact us here: <http://www.smartsync.com/support/>.

Feedback

If you have any comments or concerns about this product please direct them to <http://www.smartsync.com/support/>. Your feedback is important to us. It helps us to make this software a

better product for you. Many of its features and significant portions of its interface have been heavily influenced by comments from users. So if you have a grand idea for a new feature, or a better way of doing something, please drop us a note.

Web

Main site: <http://www.smartsync.com/support/>

6 What's New in SmartSync Pro 3?

Strong Encryption

Compressed backups could be encrypted with AES 256-bit.

Open File Backup

SmartSync Pro provides backup of open/in-use and locked files via Windows XP, Windows Server 2003/2008, Windows 7, Windows Home Server 2011 and Windows Vista Volume Shadow Copy service (VSS) technology. This function works under x86 and x64 versions of Windows.

Control Backup Speed

Now you can specify bandwidth throttling for each profile to prevent network overload and set the maximum number of concurrently running profiles to limit CPU usage.

Zip64 Format Support

The new compression engine supports the Zip64 zip file format allowing the creation of Zip files of practically unlimited size (no 4 GB limit). Zip files can contain any number of files (no 65535 files limit).

Enhanced Support for Removable Media

SmartSync Pro now detects removable disks insertion automatically starts the profile. Removable disks could be identified by drive letter, drive label or even disk serial number.

Enhanced Filtering Options

Added support for date and size file filtering.

Index

- / -

/? 58
 /Exit 58
 /ExitNow 58
 /Help 58
 /Resume 58
 /RunAll 58
 /RunGroup 58
 /RunProfile 58
 /Show 58
 /ShowAboutBox 58
 /ShowLog 58
 /Suspend 58

- A -

Activity Logging 45
 After Registration 60

- C -

CD/DVD 59
 Command line options 58
 Compare Files 54
 Compress Source into a ZIP file 38
 Connection Security 54
 Contact Information 60
 Copy Options 21
 Copy Source to Destination 38
 Copyright 5

- D -

Delete Unmatched Files 38
 Does it work on Windows 2000/XP/2003/Vista/2008 as
 a service? 58

- E -

Events 29

Exclude Files 26, 37, 50

- F -

Features 5
 File Comparison 22
 File List 54
 File menu 13
 Folder Properties 33, 35, 37
 Folders 10
 FTP 42

- H -

Help menu 15
 How to Backup Files 56
 How to backup to CD/DVD 59
 How to Register? 60
 How to Restore Files 56
 How to Synchronize Files between Remote Computers
 57
 How to Synchronize Files via LAN 57

- I -

Include Files 24, 35, 49
 Incremental Backup (with compression) 38
 Installation 8
 Interface Language 55

- L -

License Agreement 6

- M -

Menu 13, 14, 15

- N -

New Profile Wizard 47, 48, 49, 50, 51
 Notifications 32

- O -

Options 39, 41, 42, 43, 45, 46

- P -

Packages 10, 11
Preferences 33
Profile Properties 18, 20, 21, 22, 24, 26, 27, 29, 31, 32
Profiles 9

- R -

Remote Files 9
Remote Synchronization 20
Restore Wizard 52, 53

- S -

Schedule 27, 50
Security 31
Select Destination Folders 52
Select Files to Restore 53
Services 46, 58
Sync menu 14
Synchronization Parameters 38
Synchronization Types 10
Synchronize File Deletions 38
Synchronize Source and Destination 38
System requirements 8
System Tray Icon 38

- T -

Tool Bar 16
Tray Icon 38

- U -

Uninstalling 8

- V -

View menu 14

- W -

What is SmartSync Pro? 4